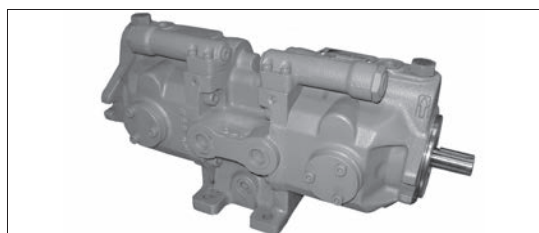
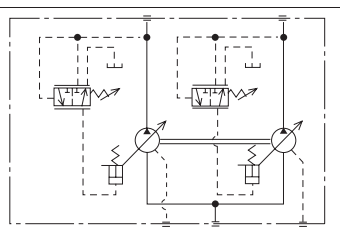


# V1515 series Dual Pump



JIS graphic symbols for hydraulic system



## Nomenclature

**V1515 A × × R - 95**

1	2	3	4	5	6
---	---	---	---	---	---

**1 Model No. (Applicable fluid: petroleum based hydraulic oil)**

V1515: V1515 series dual pump

Pump capacity:  $14.8 \text{ cm}^3 \times 2$

Not provided with a discharge rate adjusting screw

**2 Control method**

A: Pressure compensator control

**3 Pump pressure adjustment range at end side**

1: 0.8 to 7 MPa { 8 to 70 kgf/cm<sup>2</sup> }

2: 1.5 to 14 MPa { 15 to 140 kgf/cm<sup>2</sup> }

**4 Pump pressure adjustment range at shaft side**

1: 0.8 to 7 MPa { 8 to 70 kgf/cm<sup>2</sup> }

2: 1.5 to 14 MPa { 15 to 140 kgf/cm<sup>2</sup> }

3: 3.5 to 21 MPa { 35 to 210 kgf/cm<sup>2</sup> }

**5 Direction of rotation, when viewed from the shaft end**

R: Clockwise (rightward)

**6 Design No. (The design No. is subject to change)**

Note: Risers are not provided with the pump. Order them separately as required by referring to the drawing below.

## External dimension diagram

