

GEAR PUMP



FEATURES

RGP series gear pump is power supply of the hydraulic system. It is designed by high strength aluminum alloy body, precision gear, float bushings and DU bearing to provide simple structure, light-weight, high efficiency and low-noise. It is used in the hydraulic system of industrial machine, construction machine, car, lifter and transport machine, mine machine and agriculture machine.

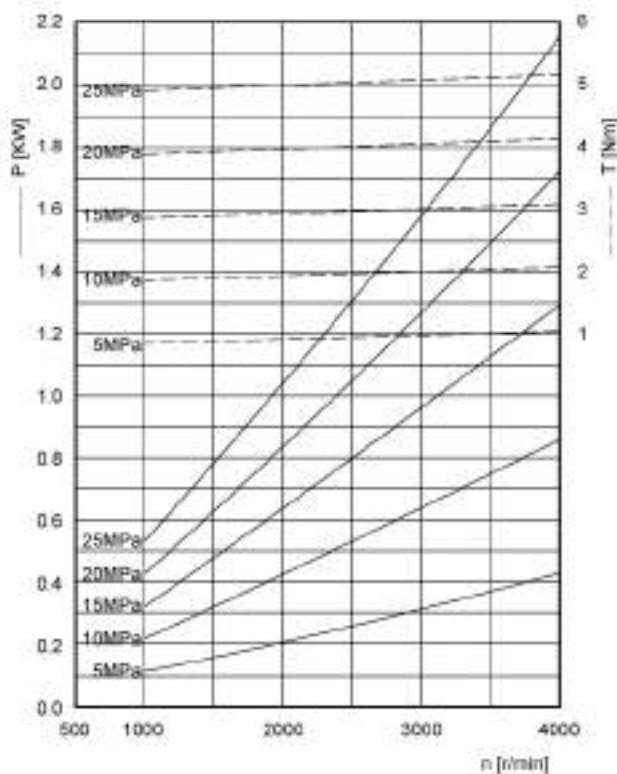
- **Volumetric efficiency $\geq 93\%$**
- **Oil temperature $-20 \sim 80^{\circ}\text{C}$**
- **Filtration $\leq 25 \mu\text{m}$**
- **Special shaft required will be available**
- **One year warranty**

Flow ml/rev & Pressure Mpa

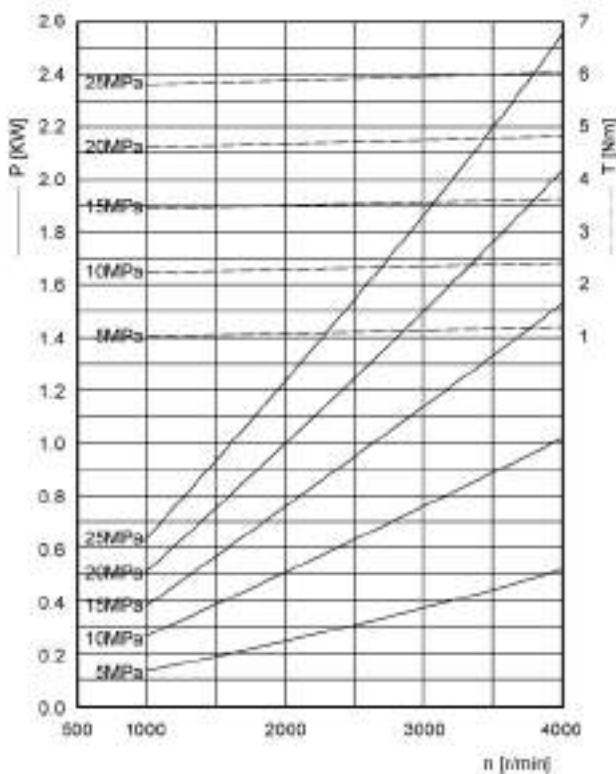
Flow Pressure	1	2	3	4	5	6	7	8	9	10	11	12	14	16	18	20	23	25	28	30	32	40
RGP-F1	25 (3500 psi)		20 (2800 psi)																			
RGP-F2	25 (3500 psi)																					
RGP-F3						25 (3500 psi)													20 (2800 psi)			
RGP-F4											25 (3500 psi)											
RGP-2A	25 (3500 psi)			21 (3000 psi)																		

■ Gear pump drive power curves, drive torque curves

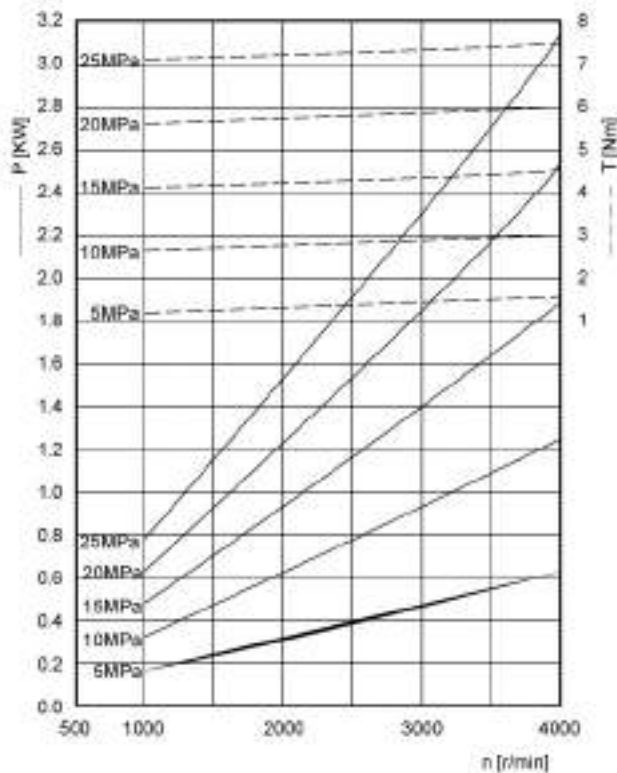
V = 1.1 ml/r



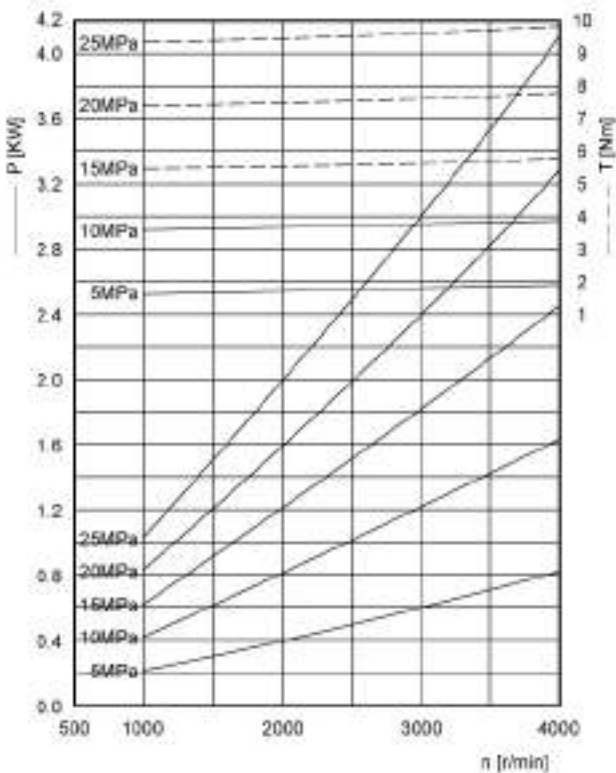
V = 1.3 ml/r



V = 1.6 ml/r

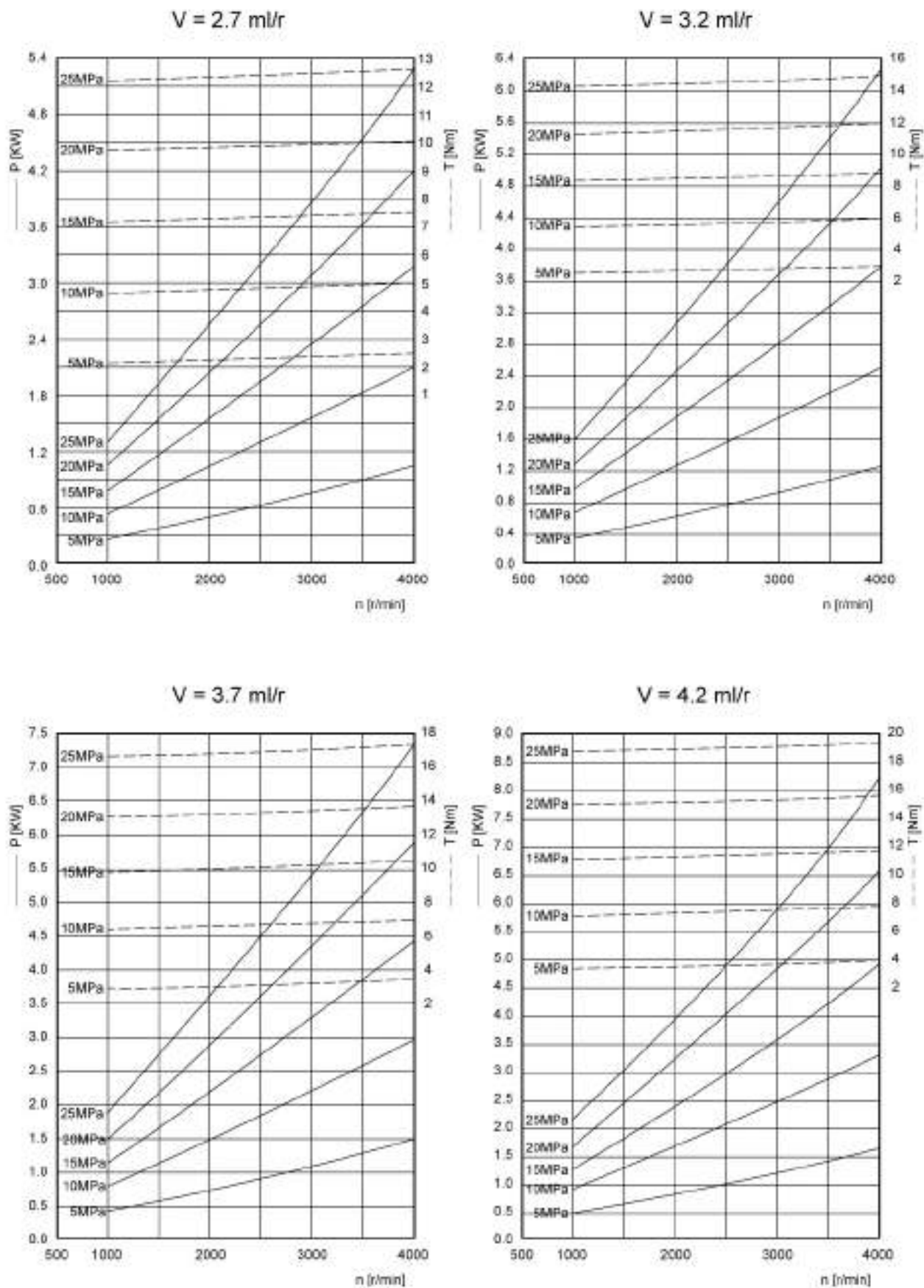


V = 2.1 ml/r

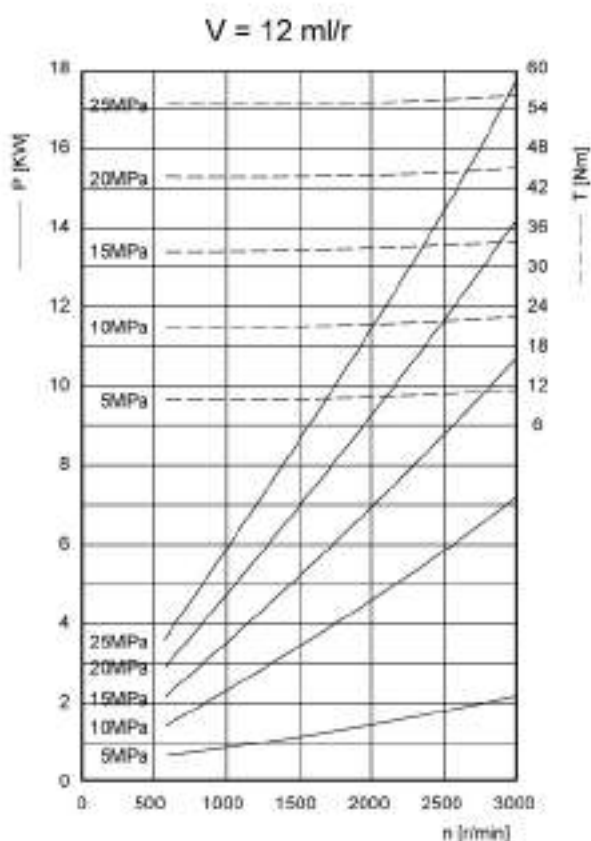
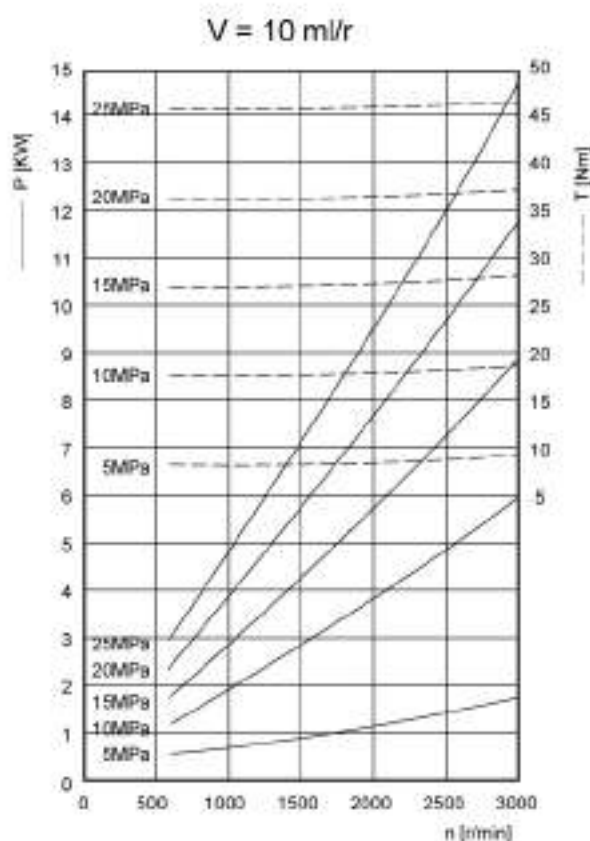
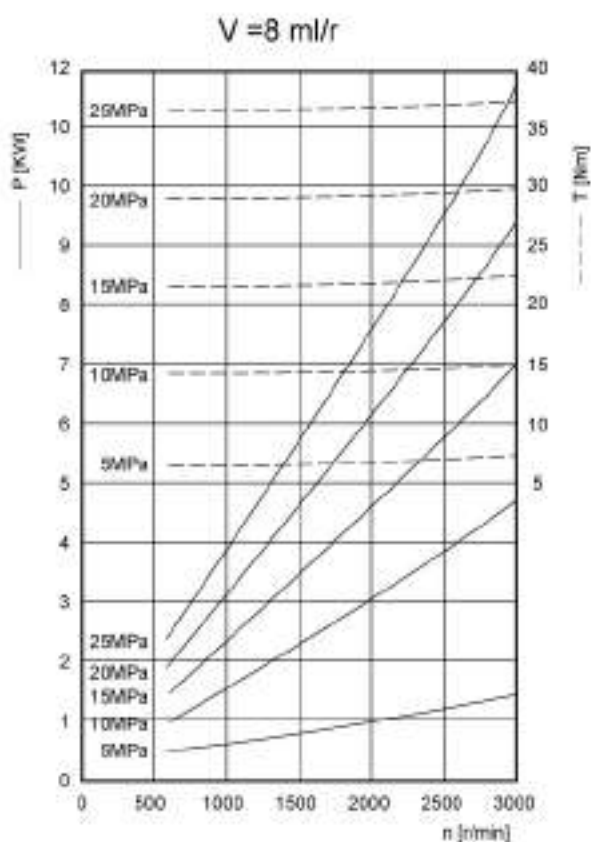
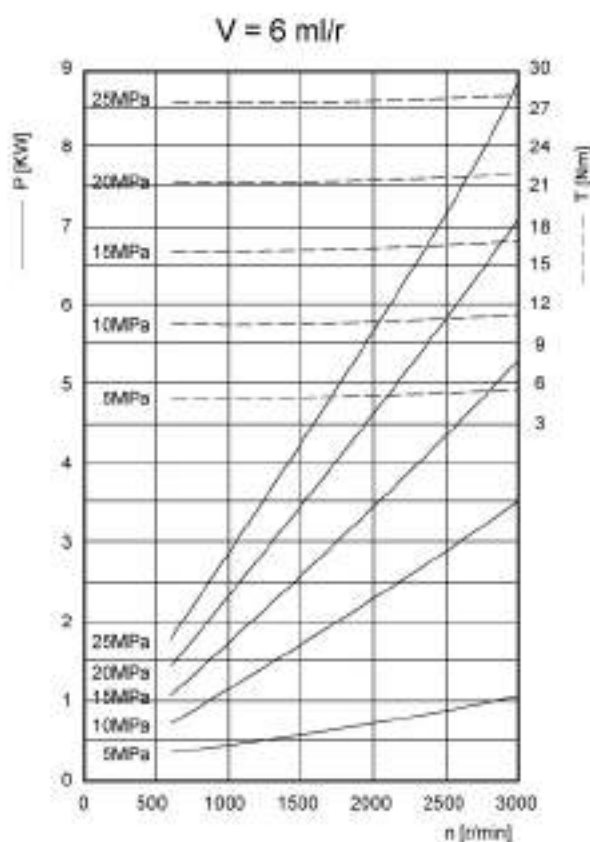


GRAPH

■ Gear pump drive power curves, drive torque curves

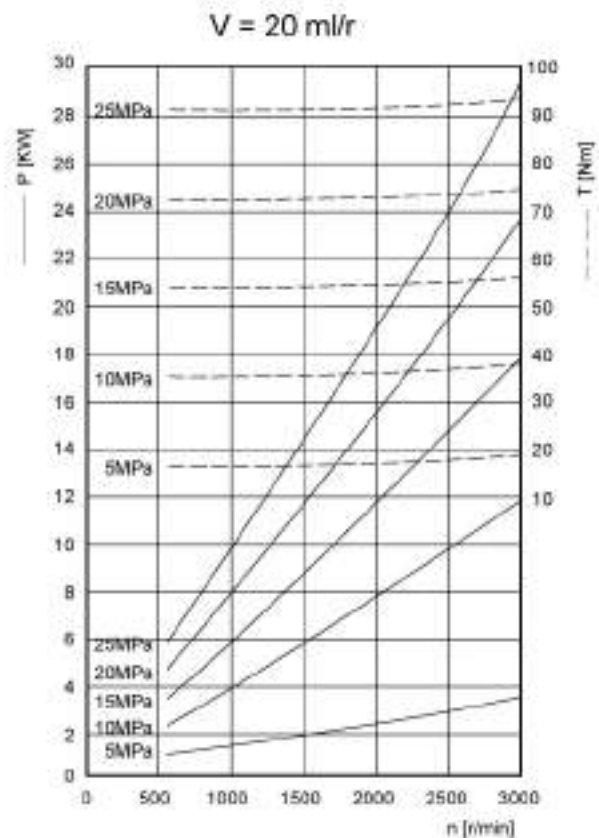
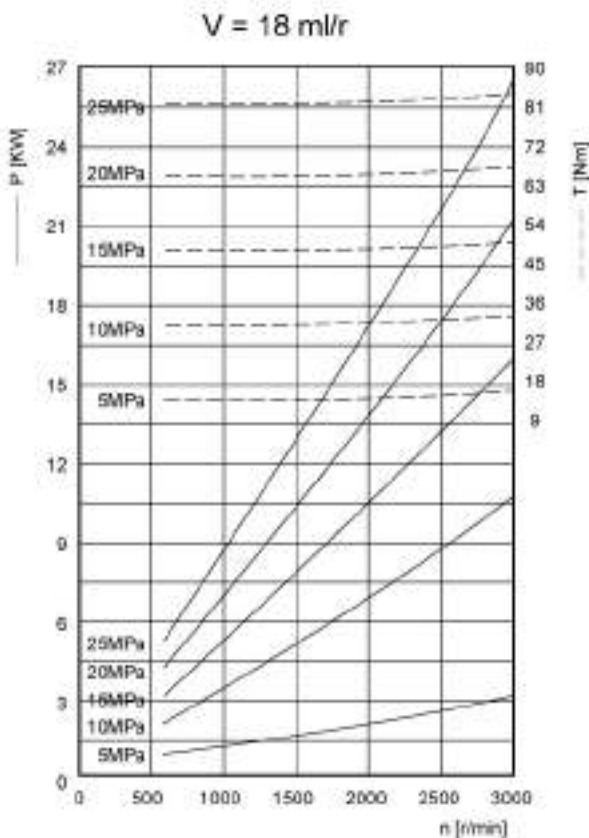
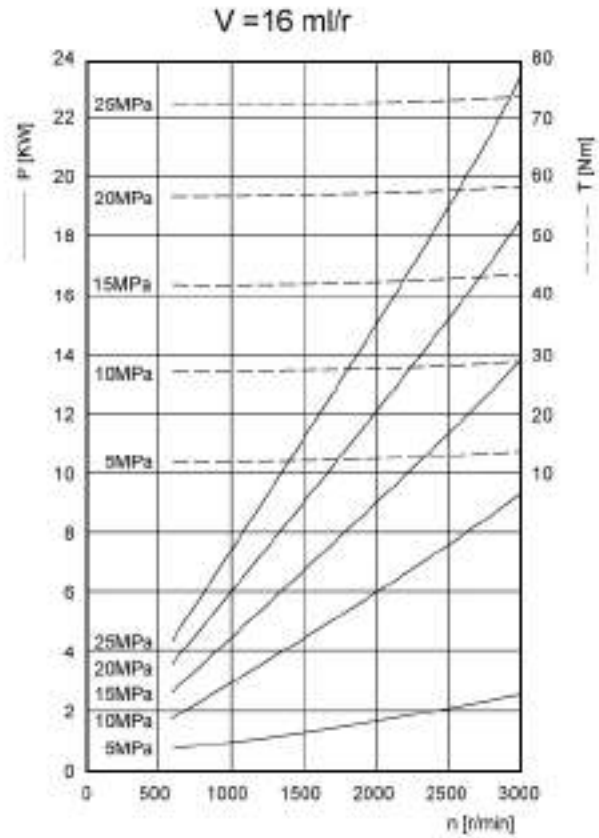
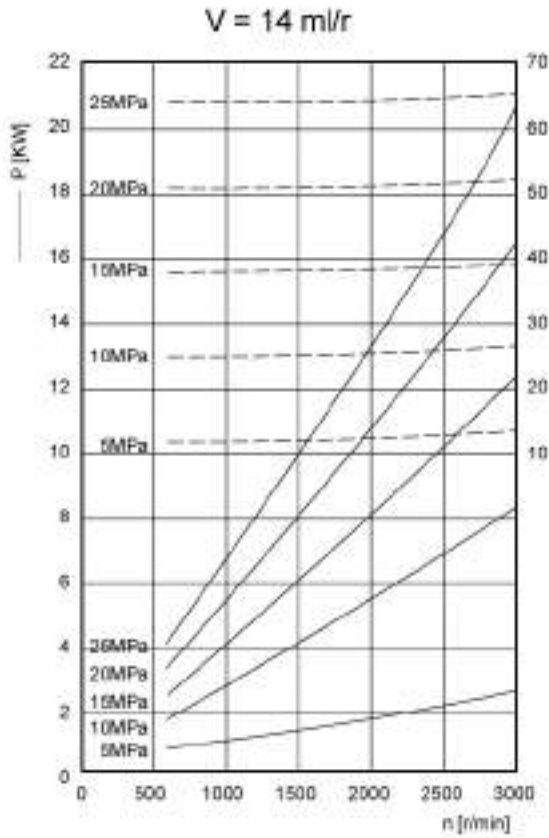


■ Gear pump drive power curves, drive torque curves

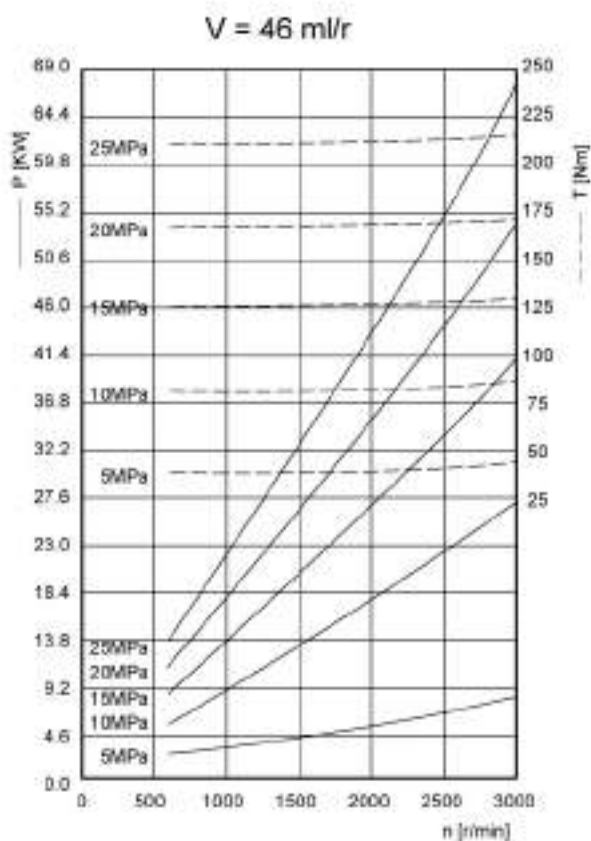
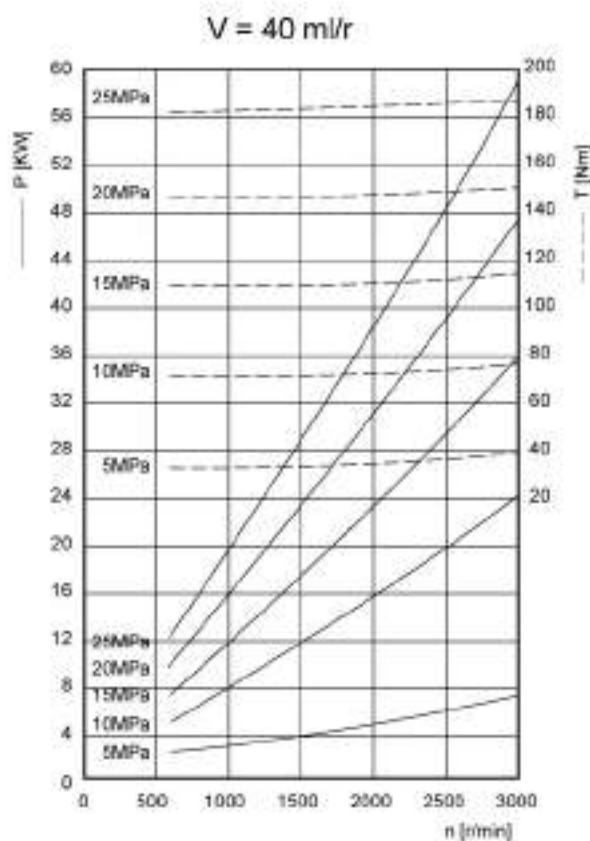
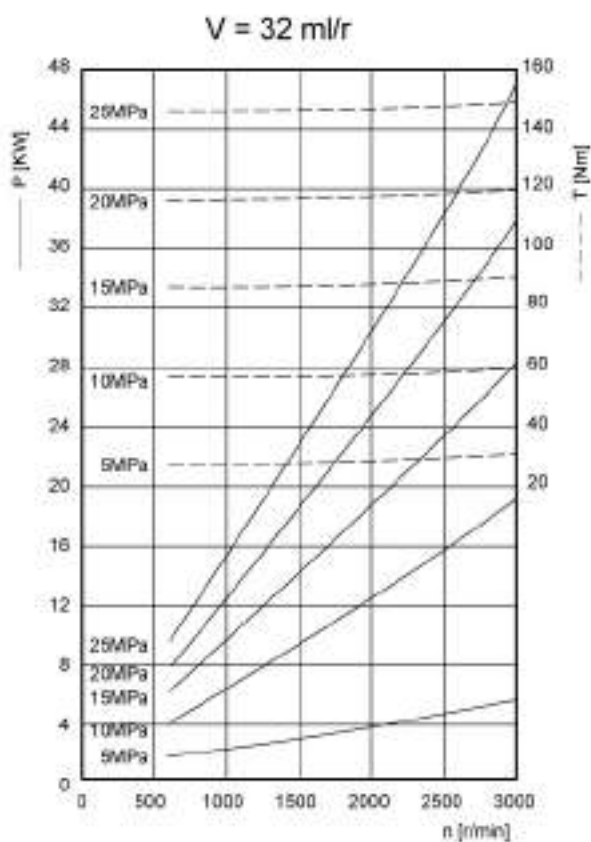
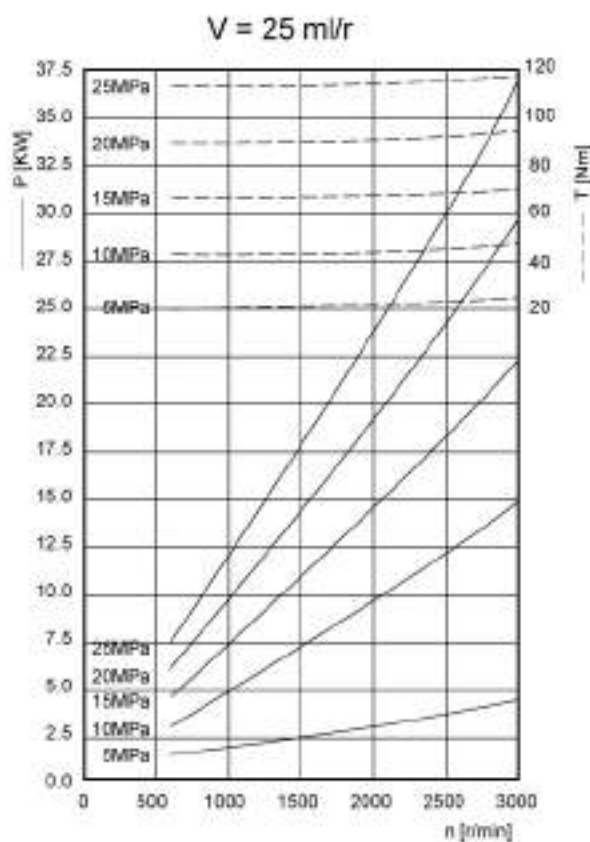


GRAPH

■ Gear pump drive power curves, drive torque curves

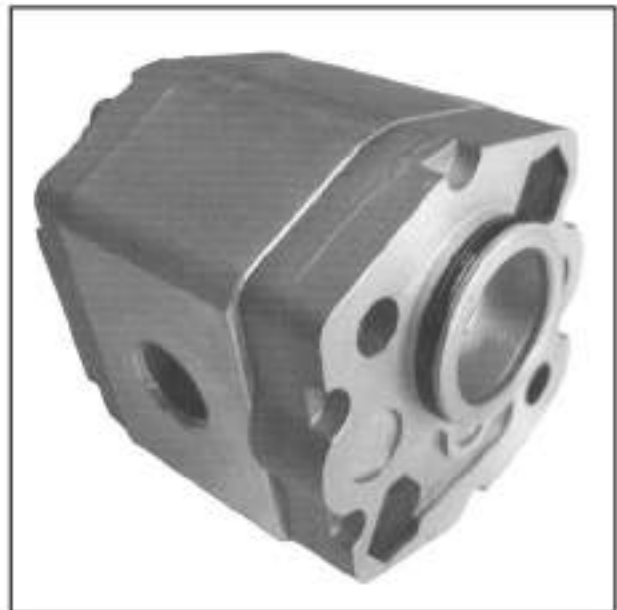


■ Gear pump drive power curves, drive torque curves



F1 GEAR PUMP

■ RGP - F1 SERIES GEAR PUMP



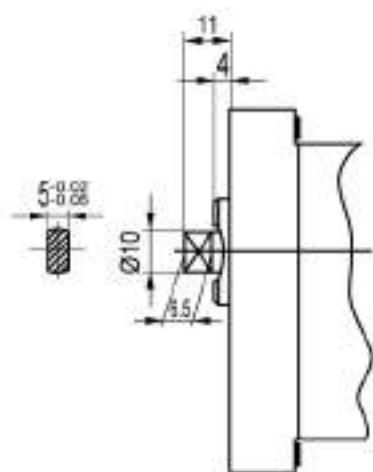
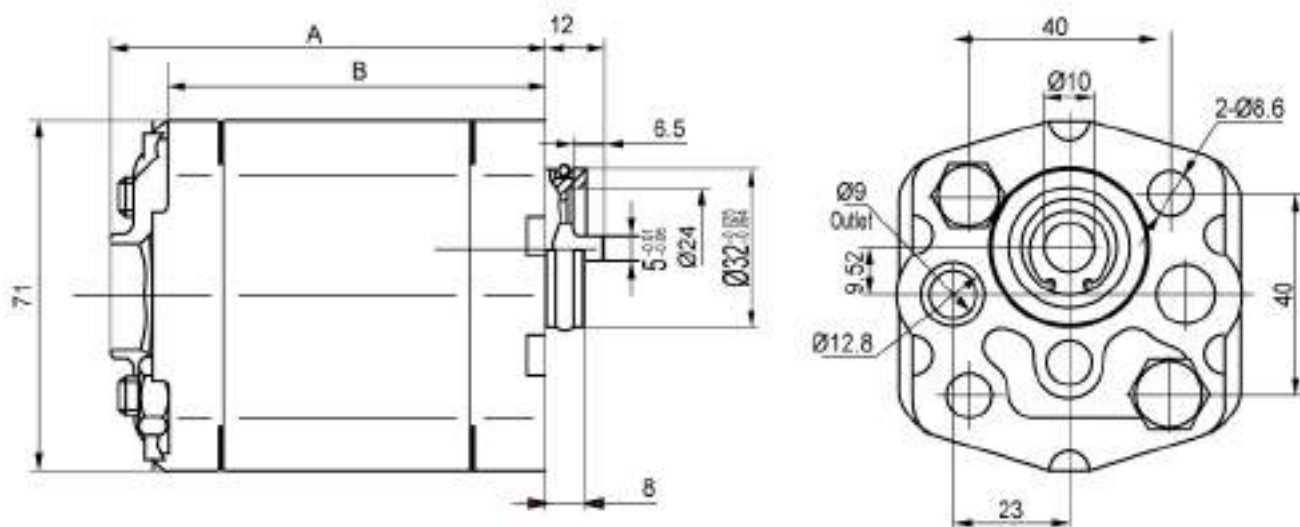
HOW TO ORDER

RGP - F1 * * - R * * *

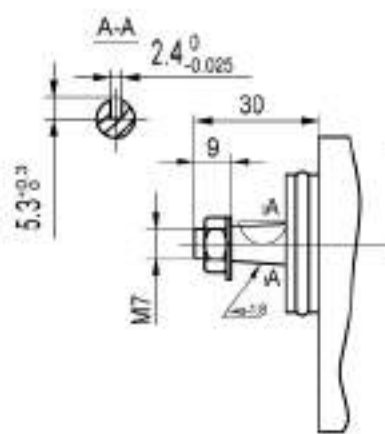
- Gear Pump
- Series Number
- Nominal Discharge
- Rotation (from shaft side)
R: clock wise
L: anti-clock wise
- Outlet Position
Omit: side
A: front
- Inlet Position
Omit: side
A: back
- Shaft Type
B: flat key
Z: taper

Model	Displacement ml/rev	Pressure Mpa		Speed rpm		Input Power kw	Weight kg
		Rated	Max	Max	Min		
RGP-F106	0.6	20 (2800 psi)	25 (3500 psi)	6000	600	0.47	0.75
RGP-F111	1.1					0.86	0.77
RGP-F113	1.3					1.02	0.79
RGP-F116	1.6					1.25	0.80
RGP-F118	1.8					1.45	0.81
RGP-F121	2.1					1.65	0.82
RGP-F127	2.7			2.12	0.85		
RGP-F132	3.2			2.51	0.87		
RGP-F137	3.7			2.90	0.90		
RGP-F142	4.2			3.29	0.92		
RGP-F148	4.8	16 (2200 psi)	20 (2800 psi)	3500	3.76	0.95	
RGP-F158	5.8			2900	4.55	1.00	
RGP-F180	8.0			2100	6.27	1.10	

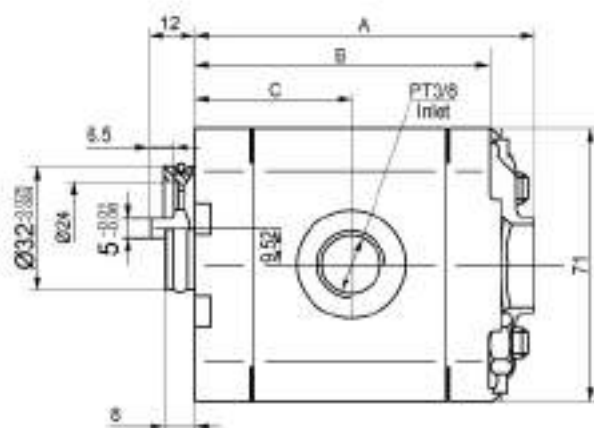
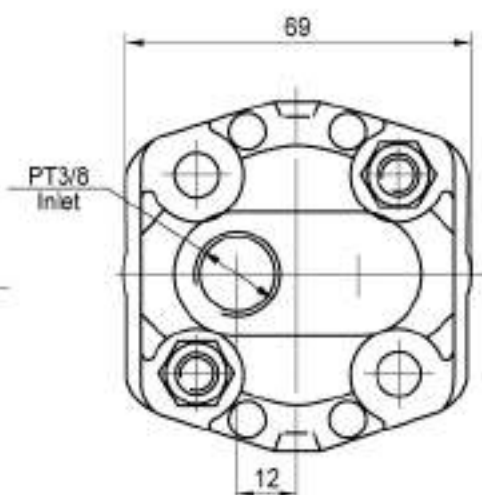
F1 GEAR PUMP



• Flat key shaft



• Taper shaft type



MODEL	A(mm)	B(mm)	C(mm)
RGP-F111	74	62	33
RGP-F113	75	63	33.5
RGP-F116	76	64	34
RGP-F118	77	65	34.5
RGP-F121	78	66	35
RGP-F127	80	68	36
RGP-F132	82	70	37
RGP-F137	84	72	38
RGP-F142	86	74	39
RGP-F148	88	76	40
RGP-F158	92	80	42
RGP-F180	100	88	46

F2 GEAR PUMP

RGP - F2 SERIES GEAR PUMP



HOW TO ORDER

RGP - F2 * * - R * * * *

• Gear Pump

• Series Number

• Nominal Discharge

• Rotation (from shaft side)

R: clock wise

L: anti-clock wise

• In / Outlet Port

Omit: thread

F : flange

• Mounting Flange

Omit: 2 bolt

S : 4 bolt

• Shaft Type

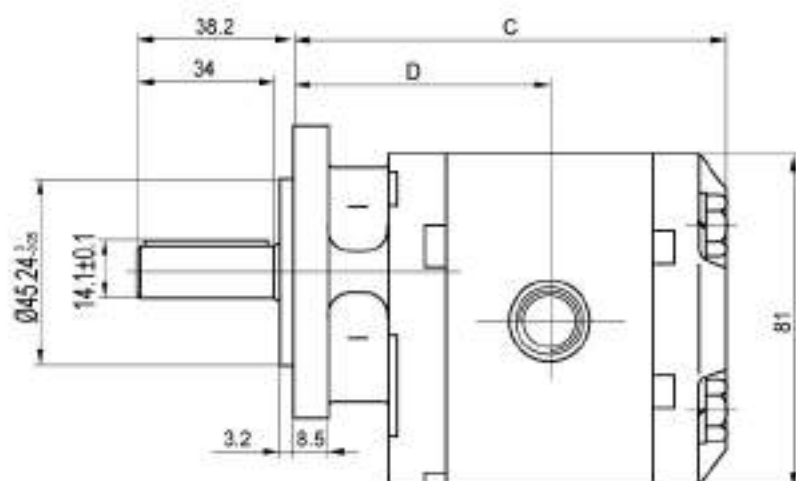
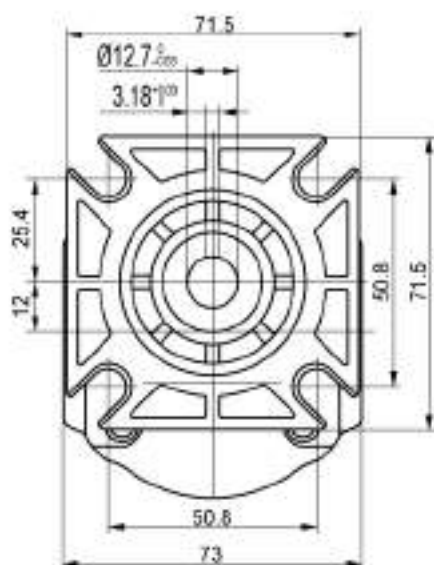
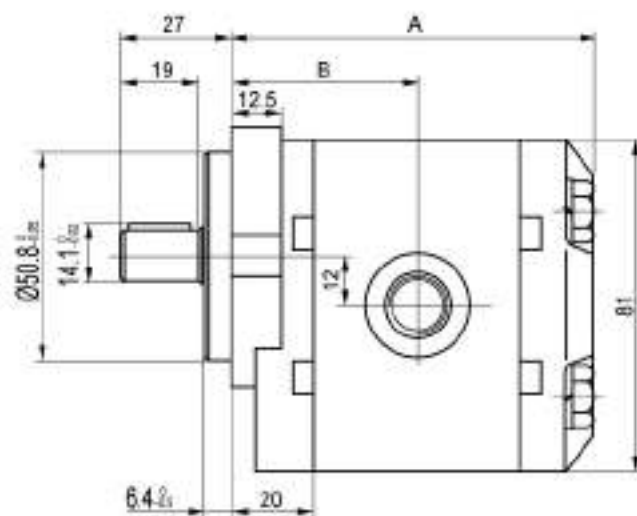
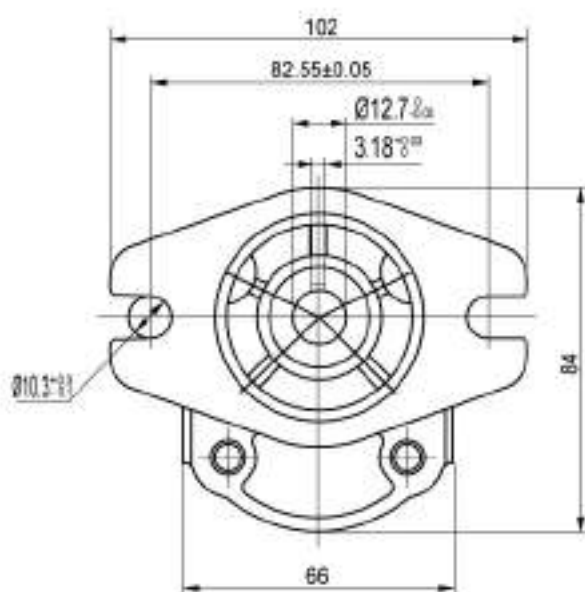
Omit: Ø12.7 square key

A : Ø12 square key

S* : SAE * spline

Model	Displacement ml/rev	Pressure Mpa		Speed rpm		Input Power kw	Weight kg
		Rated	Max	Max	Min		
RGP-F201	1.3	20 (2800 psi)	25 (3500 psi)	3500	600	1.02	0.92
RGP-F202	2.0					1.25	1.05
RGP-F2025	2.7					2.12	1.22
RGP-F203	3.4					2.17	1.36
RGP-F204	4.1					3.25	1.52
RGP-F205	5.1					4.15	1.72
RGP-F206	6.1					4.72	1.90
RGP-F208	8.0					6.30	2.20

F2 GEAR PUMP



MODEL	A(mm)	B(mm)	C(mm)	D(mm)	PORT	
					INLET	OUTLET
RGP-F201	82	42	99	59	1/2"	3/8"
RGP-F202	84	43	101	60		
RGP-F2025	86	44	103	61		
RGP-F203	88	45	105	62		
RGP-F204	90	46	107	63		
RGP-F205	93	47.5	110	64.5		
RGP-F206	96	49	113	66		
RGP-F208	102	52	120	70		

F3 GEAR PUMP

RGP - F3 SERIES GEAR PUMP



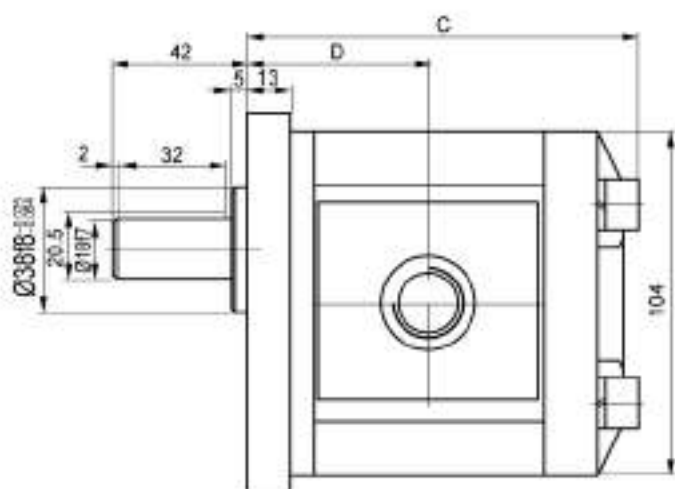
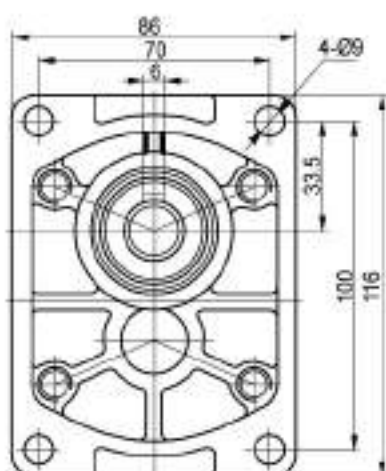
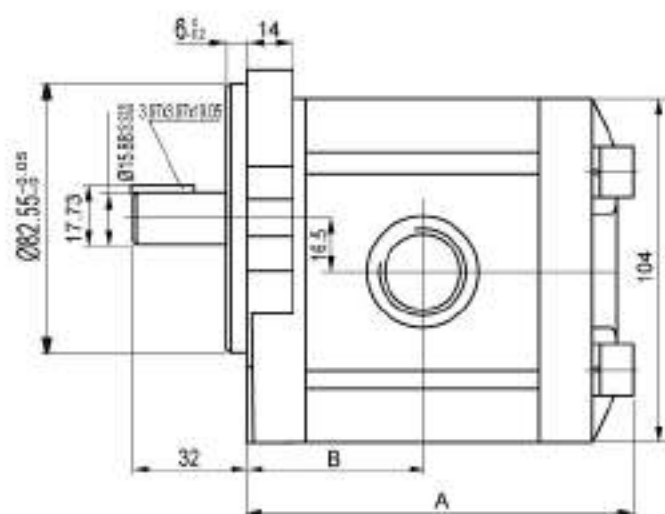
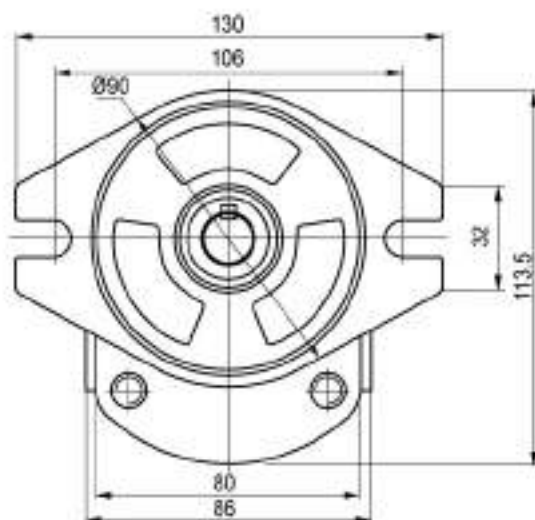
HOW TO ORDER

RGP - F3 ** - R ** * * - *

- Gear Pump
- Series Number
- Nominal Discharge
- Rotation (from shaft side)
R: clock wise
L: anti-clock wise
- Cover
Omit: aluminum
C: casting iron
- In / Outlet Port
Omit: thread
F: flange
- Mounting Flange
Omit: 2 bolt
S : 4 bolt
- Shaft Type
Omit: Ø15.88 square key
19 : Ø19.05 square key
S* : SAE * spline

Model	Displacement ml/rev	Pressure Mpa		Speed rpm		Input Power kw	Weight kg	
		Rated	Max	Max	Min		2 bolt	4 bolt
RGP-F304	4	20 (2800 psi)	25 (3500 psi)	3500	600	3.2	2.35	2.50
RGP-F306	6					4.7	2.45	2.60
RGP-F308	8					6.3	2.55	2.70
RGP-F310	10					7.8	2.60	2.80
RGP-F312	12					9.4	2.69	2.85
RGP-F314	14					11.0	2.73	2.88
RGP-F316	16					12.5	2.85	3.01
RGP-F318	18					14.1	2.96	3.12
RGP-F320	20					15.7	3.06	3.20
RGP-F323	23					18.0	3.25	3.29
RGP-F325	25	19.6	3.27	3.41				
RGP-F328	28	16 (2200 psi)	20 (2800 psi)	3500	600	22.0	3.50	3.64
RGP-F330	30	23.5	3.60			3.70		

F3 GEAR PUMP



MODEL	A(mm)	B(mm)	C(mm)	D(mm)	PORT	
					INLET	OUTLET
RGP-F304	96	44	98	46	1/2"	1/2"
RGP-F306	98	45	100	47		
RGP-F308	101.5	46.75	103.5	48.75		
RGP-F310	104	48	106	50		
RGP-F312	108	50	110	52		
RGP-F314	110	51	112	53	3/4"	1/2"
RGP-F316	114	53	116	55		
RGP-F318	117	54.5	119	56.5		
RGP-F320	120	56	122	58		
RGP-F323	123	57.5	125	59.5		
RGP-F325	128	60	130	62		
RGP-F328	133	62.5	135	64.5		
RGP-F330	136	64	138	66		

F4 GEAR PUMP

■ RGP - F4 SERIES GEAR PUMP



HOW TO ORDER

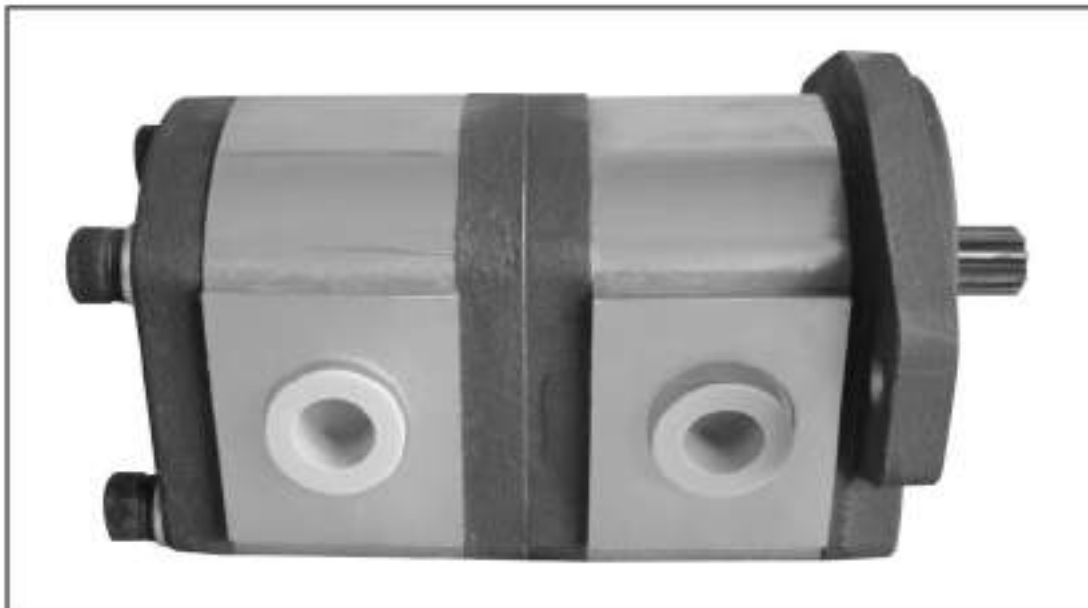
RGP - F4 ** - R ** * *

- Gear Pump
- Series Number
- Nominal Discharge
- Rotation (from shaft side)
R: clock wise
L: anti-clock wise
- Cover
Omit: aluminum
C : casting iron
- In / Outlet Port
Omit: thread
F : flange
- Shaft Type
Omit: Ø19.05 square key

Model	Displacement ml/rev	Pressure Mpa		Speed rpm		Input Power kw	Weight kg
		Rated	Max	Max	Min		
RGP-F410	10	20 (2800 psi)	25 (3500 psi)	3000	500	8.2	3.3
RGP-F416	16					13.1	3.5
RGP-F425	25					20.4	3.8
RGP-F427	27					21.3	3.9
RGP-F430	30					24.1	4.0
RGP-F432	32					26.1	4.1
RGP-F440	40					32.7	4.3

F33 GEAR PUMP

■ RGPD - F33 DOUBLE GEAR PUMP



HOW TO ORDER

RGPD - F33 - * * / * * - R * * * *

• Double Gear Pump

• Series Number

• Nominal Discharge
shaft side / back side
4,6,8,10,12,14,16
18,20,23,25,28,30 ml/rev

• Rotation (from shaft side)
R: clock wise
L: anti-clock wise

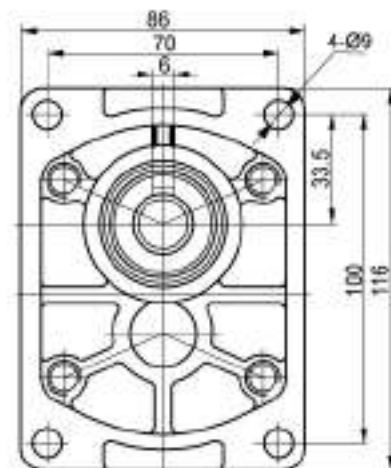
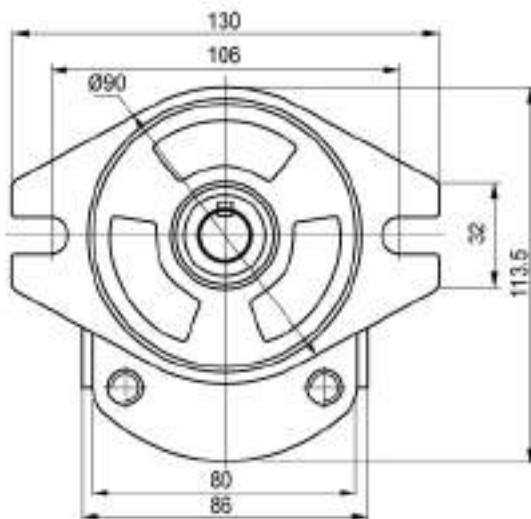
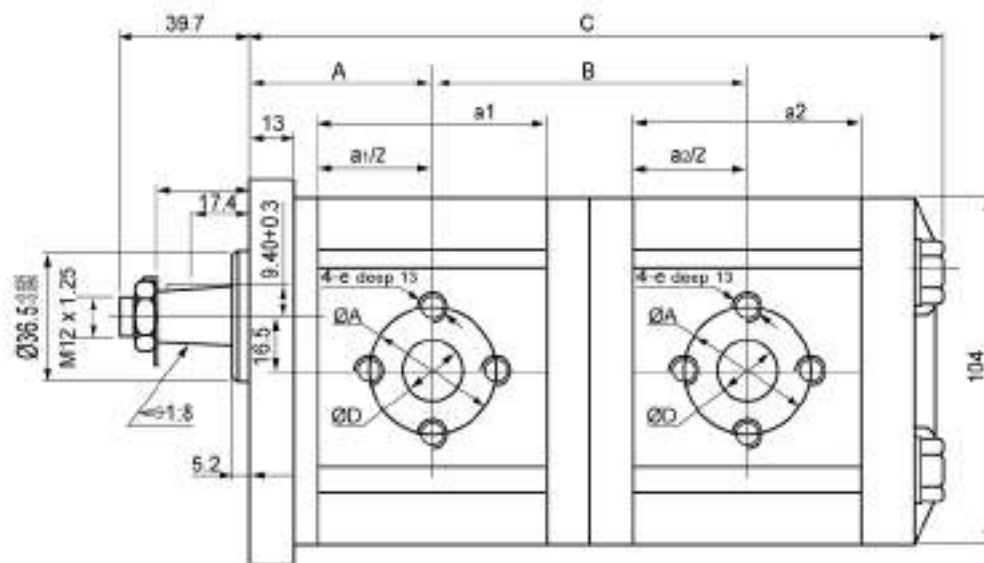
• Cover
Omit: aluminum
C : casting iron

• In / Outlet Port
Omit: thread
F : flange

• Mounting Flange
Omit: 2 bolt
S : 4 bolt

• Shaft Type
Omit: Ø15.88 square key
19: Ø19.05 square key
S* : SAE * spline

F33 GEAR PUMP



INSTALLATION DIMENSIONS

Discharge ml/rev	a1	a2	FLANGE INLET			FLANGE OUTLET		
			ØD	ØA	c	ØD	ØA	c
4	52		13	30	M6	13	30	M6
6	54							
8	57.5							
10	60							
12	64		20	40	M8	13	30	M6
14	66							
16	70							
20	76							
25	84		22					

MODEL	A	B	C
RGPD-F33-*/**/*-R	19+a1/2	26+a1/2+a2/2	68.5+a1+a2

2A GEAR PUMP

■ RGP - 2A SERIES GEAR PUMP



HOW TO ORDER

RGP - 2A - F * * - R

• Gear Pump

• Series Number

• Nominal Discharge

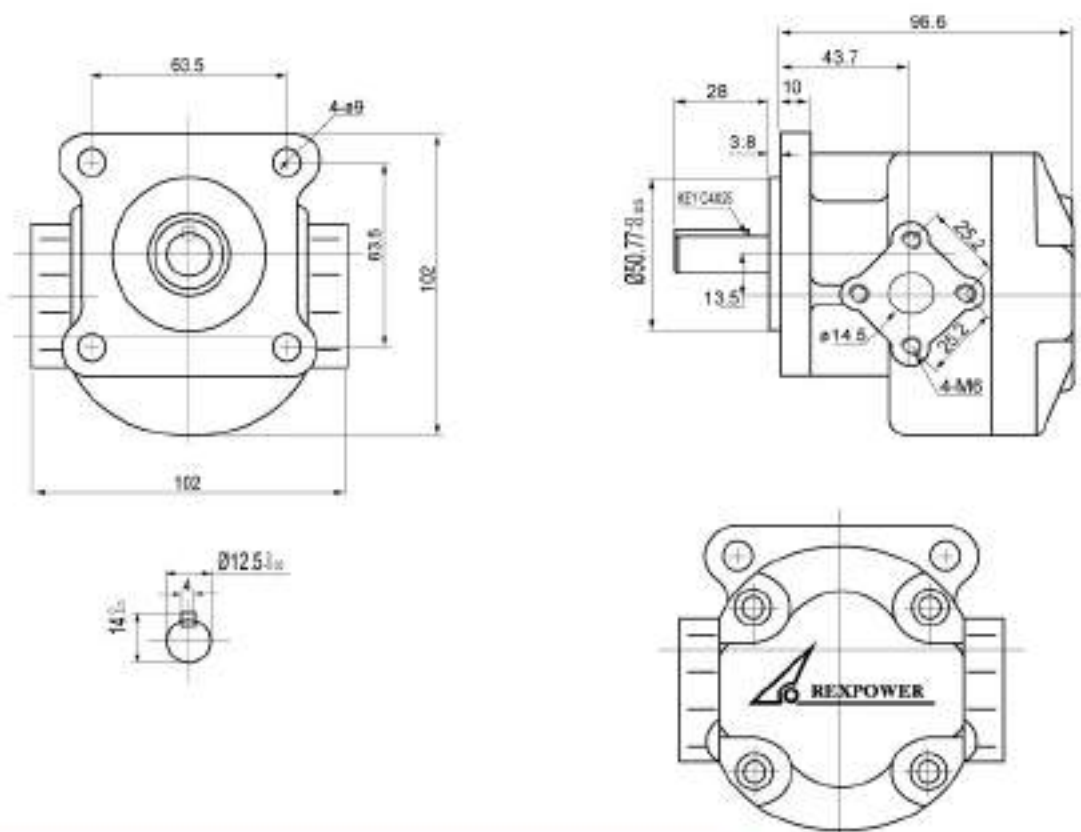
• Rotation (from shaft side)

R: clock wise

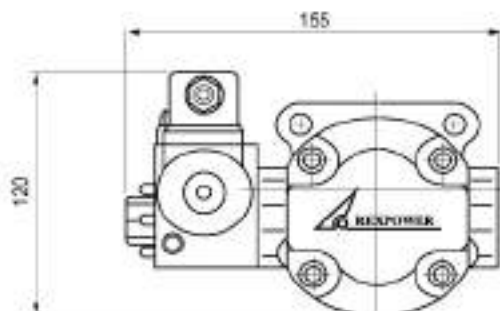
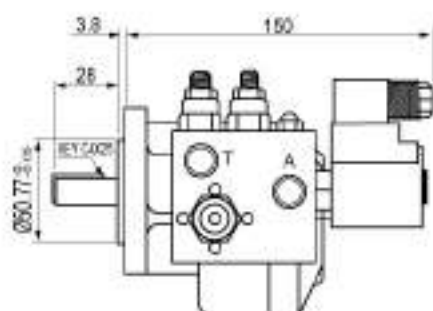
L: anti-clock wise

Model	Displacement ml/rev	Pressure Mpa		Speed rpm		Weight kg
		Rated	Max	Max	Min	
RGP-2A-F02	2	21 (3000 psi)	25 (3500 psi)	5000	850	1.55
RGP-2A-F03	3					1.56
RGP-2A-F04	4					1.58
RGP-2A-F05	5			3000	600	1.60
RGP-2A-F06	6					1.60
RGP-2A-F08	8					1.65
RGP-2A-F09	9	17.5 (2500 psi)	21 (3000 psi)	2000	500	1.65
RGP-2A-F11	11					1.70
RGP-2A-F12	12					1.70

2A GEAR PUMP



● GEAR PUMP WITH LIFT VALVE





PISTON PUMP



HI-PRESSURE VANE PUMP



TROCHOIDAL PUMP



INTERNAL GEAR PUMP



REXPOWER HYDRAULIC & PNEUMATIC CO., LTD

Room C, 3F, No. 4, Lane 27, Section 2, Chung Shan North Road, Taipei Taiwan.

TEL : (886-2)25212774, 25115628 FAX: (886-2)25224608, 25237221

E-Mail : rexpower@ms9.hinet.net <http://www.rexpower.com>

Factory : **SHANGHAI DONGJIE HYDRAULIC CO., LTD.**

No. 598, Hengan Road, Pu Dong New Area, Shanghai 200137

KOREA • THAILAND • MALAYSIA • PHILIPPINES • VIETNAM • COLOMBIA • SOUTH AFRICA • POLAND