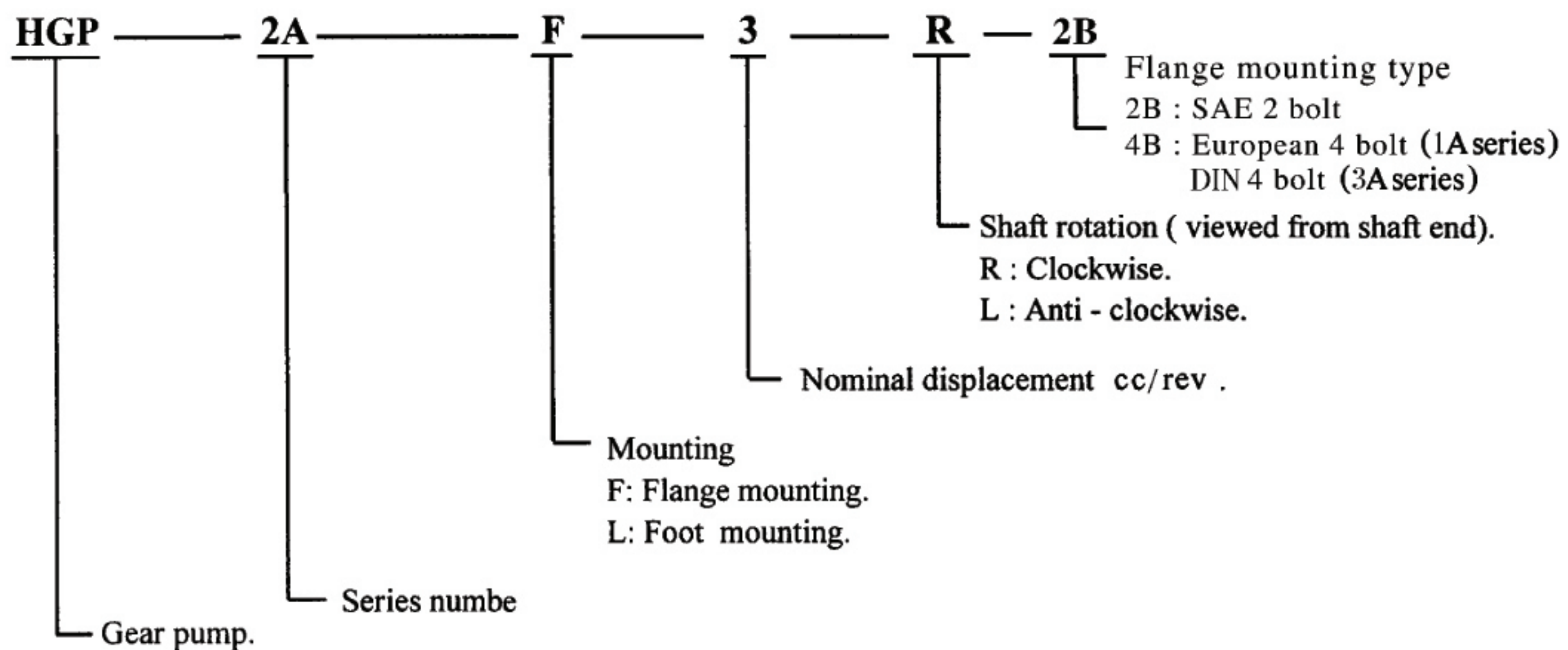


# GEAR PUMPS

HGP Series gear pump was designed to maintain high efficiency and longer life-span. HGP gear pump was made from die casting aluminum provide compact and light weight.

Model	Flow cc/rev	Speed drive		A	B	C		Max. pressure kg/cm <sup>2</sup>	Working pressure kg/cm <sup>2</sup>	Weight kg				
		Max.	Min.			Inlet	Outlet							
HGP-1A-F1	1.0	4500	1000	77	38.5	3/8"	3/8"	250	210	1.00				
HGP-1A-F2	2.0		80.5	40.25	1.05									
HGP-1A-F3	3.0		600	86	43					1.15				
HGP-1A-F4	4.0	4000	500	88	44	1/2"	3/8"	250	210	1.18				
HGP-1A-F5	5.0	92		46	1.20									
HGP-1A-F6	6.0	3200		96	48					1.30				
HGP-1A-F8	7.8	2000	500	102	51	1/2"	3/8"	250	210	1.30				
HGP-2A-F2	2.0		900	/	/					250	210	1.63		
HGP-2A-F3	3.0		5000									850	1.65	
HGP-2A-F4	4.0	4500	800			1.67								
HGP-2A-F6	6.0	3500	700			1.69								
HGP-2A-F8	7.5	3000	600			1.72								
HGP-2A-F9	9.0	2500	550			1.75								
HGP-2A-F11	10.5	2000	500			210	175	1.77						
HGP-2A-F12	12.0							1.80						
HGP-3A-F6	6.0							3000	700			93.3	46.5	1/2"
HGP-3A-F8	8.4	97.3	48.5			2.40								
HGP-3A-F11	11.0	600	101.3	50.5	52.35	3/4"	1/2"		250	210	2.55			
HGP-3A-F13	13.0										105.0	53.45	2.70	
HGP-3A-F14	14.3										107.2	55.3	2.85	
HGP-3A-F17	16.5	400	110.9	57.5	60.7	1"	3/4"		175	140	3.05			
HGP-3A-F19	19.2										115.3	62.4	3.20	
HGP-3A-F23	23.0										121.76	64.9	3.35	
HGP-3A-F25	25.0										125.1	62.4	3.50	
HGP-3A-F28	28.0	131.1	64.9	3.60										

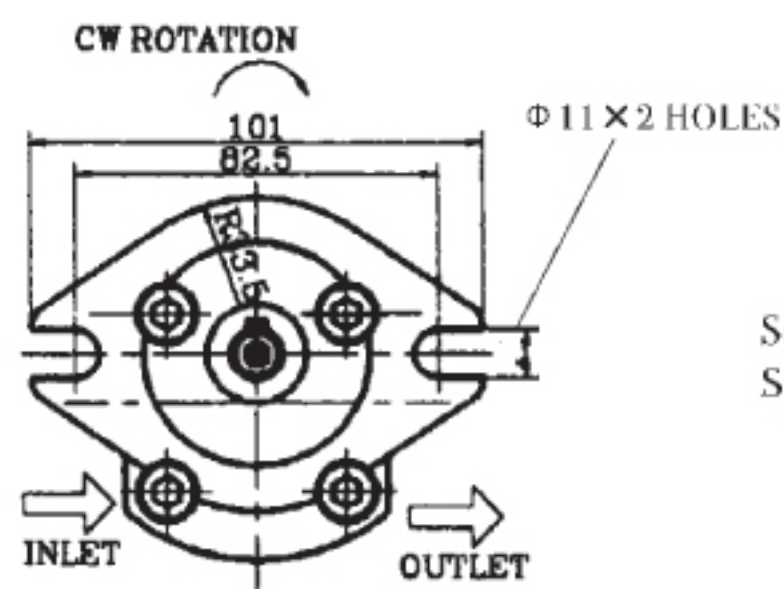
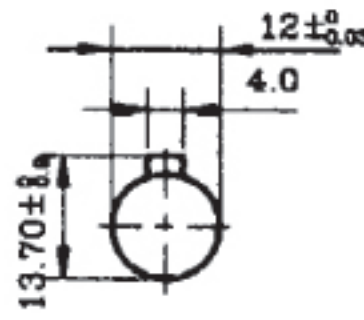
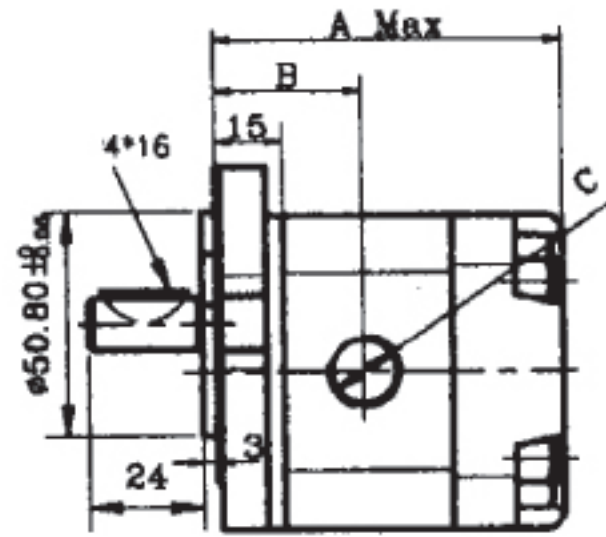
## ORDERING CODE



# GEAR PUMPS

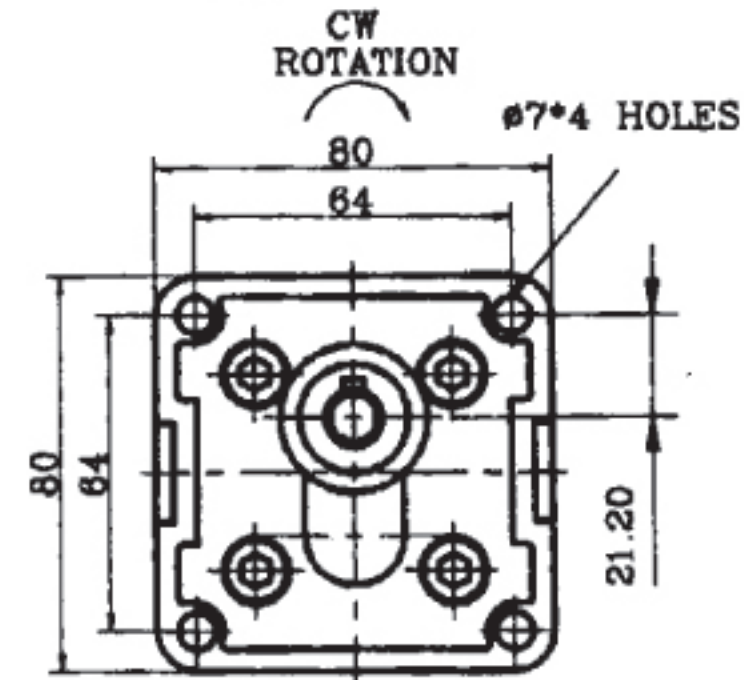
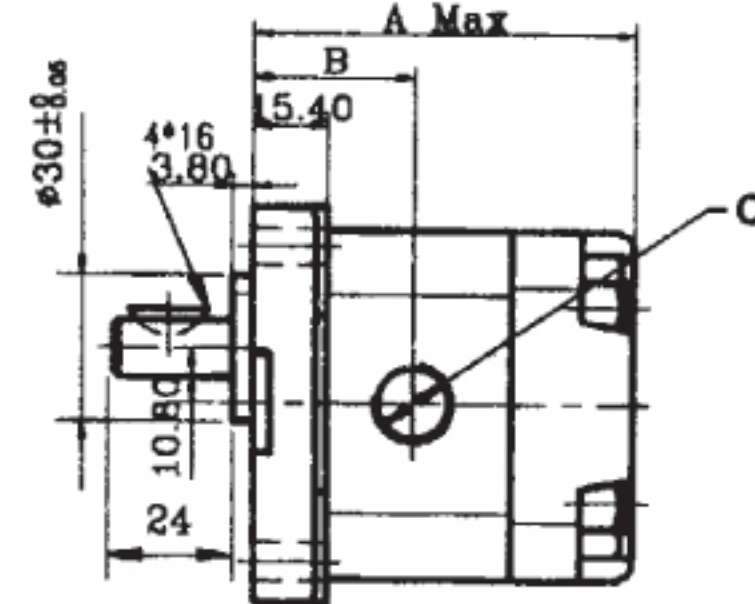
HGP-1A-\*

2 Bolts

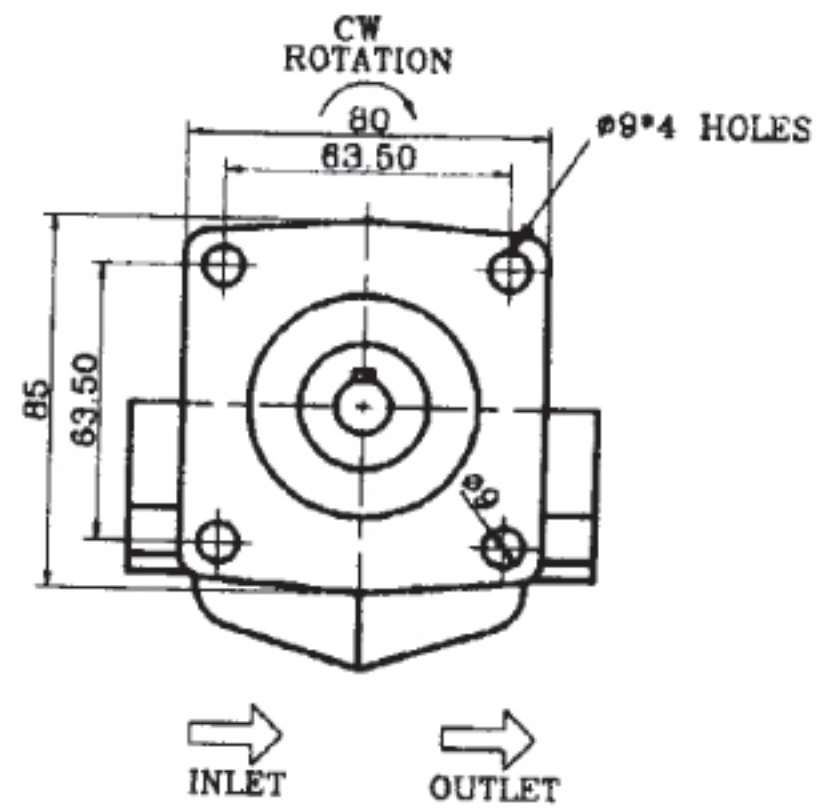
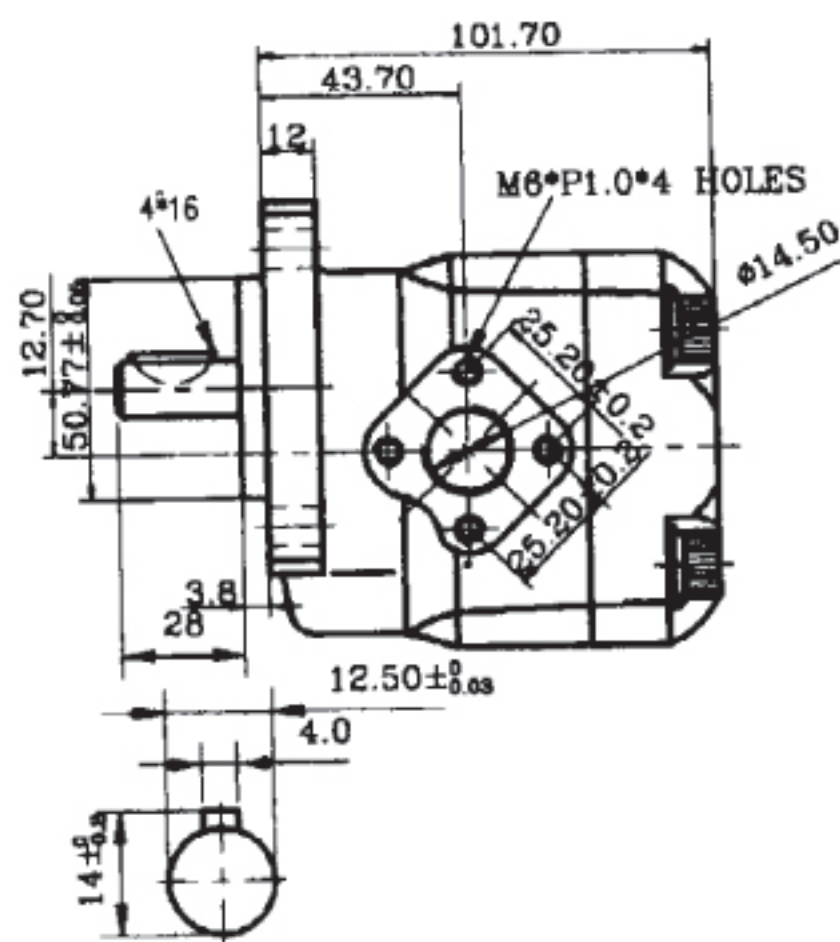
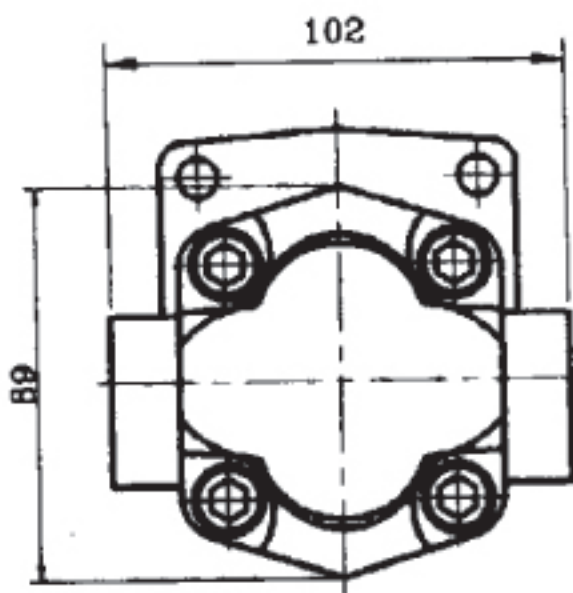


Standard type:  $\phi 12$   
Special type:  $\phi 10, \phi 12.7$

4 Bolts

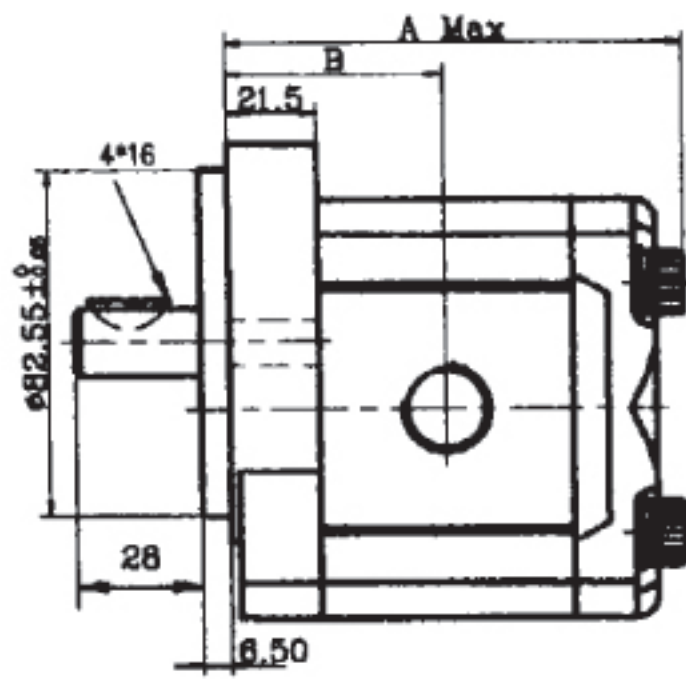


HGP-2A-\*

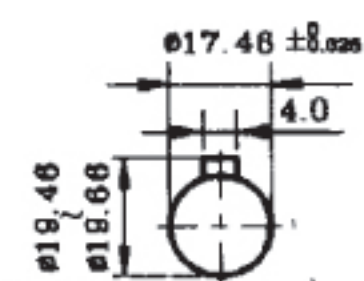
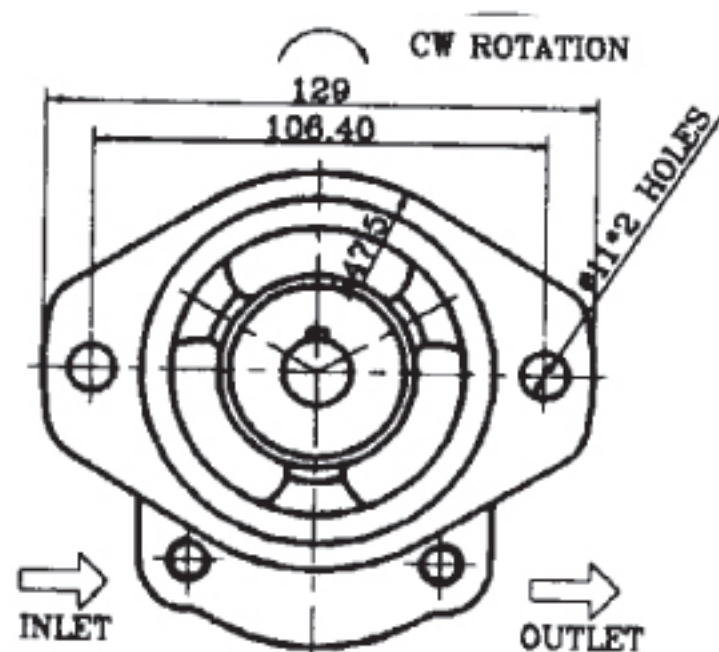
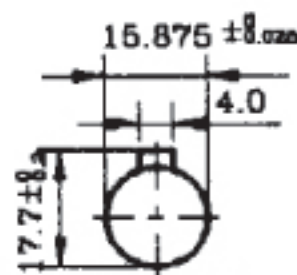


HGP-3A-\*

2 Bolts



\* SHAFT TYPE



4 Bolts

