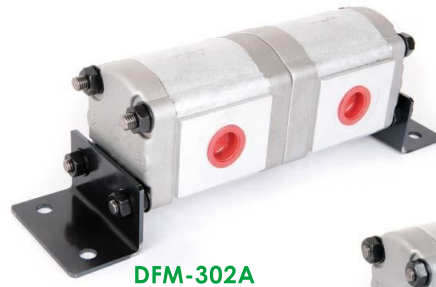


DFM-302A

- Displacement : 4~35 cc/rev
- Max. Pressure : 210 kgf/cm²
(3000psi)

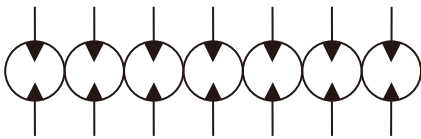
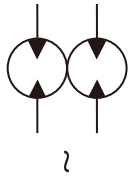


DFM-302A

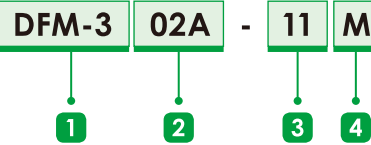


DFM-304A

SCHEMATIC SYMBOL



ORDER CODES



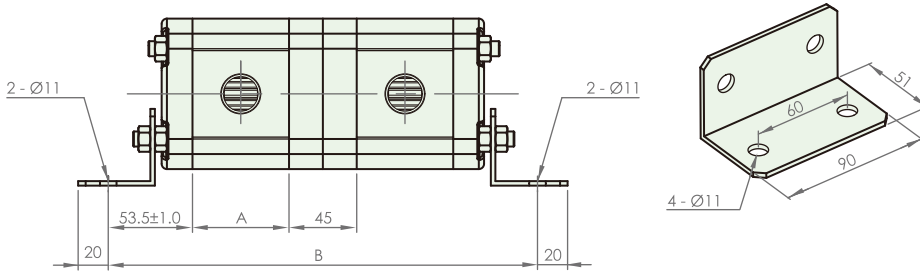
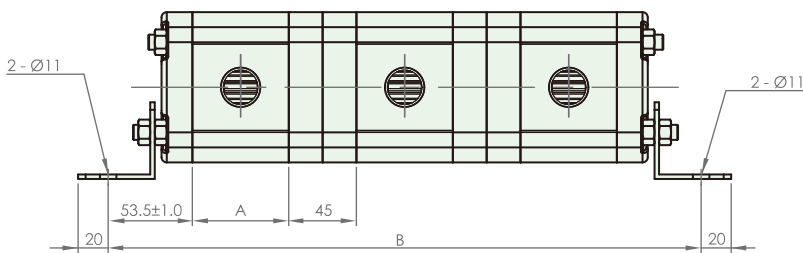
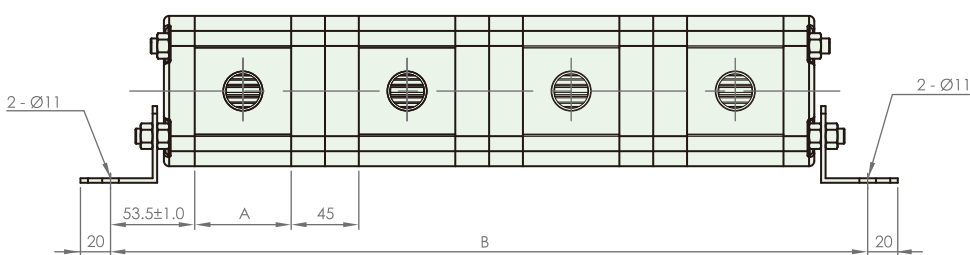
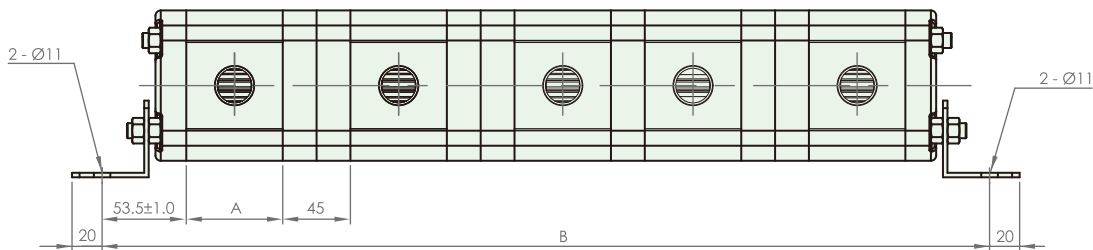
1 Model Name	DFM-3	
2 Stations	02A	2 stations
	03A	3 stations
	04A	4 stations
	05A	5 stations
	06A	6 stations
3 Flow Rate	07A	7 stations
	4, 6, 8, 11, 13, 14, 17, 19, 23, 25, 28, 30, 35	
4 Functional Type	M	synchronous flow divider

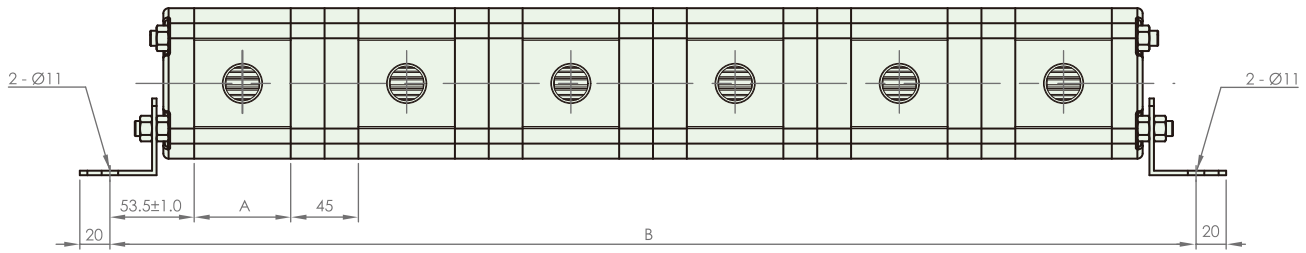
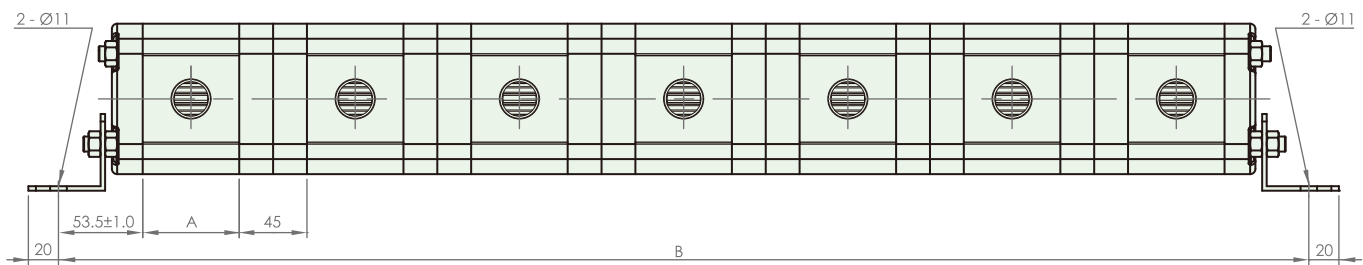
SPECIFICATIONS

Model	Accurate Displacement Capacity (cc/rev)	Operational Pressure (kgf/cm ²)	Speed (r.p.m.)		Ports Size (PT)	
			Loaded	Unloaded	Inlet	Outlet
DFM-30*A-4M	4	210	1000	2000	3/4"	1/2"
DFM-30*A-6M	6	210	1000	2000	3/4"	1/2"
DFM-30*A-8M	8.4	210	1000	2000	3/4"	1/2"
DFM-30*A-11M	11	210	1000	2000	3/4"	1/2"
DFM-30*A-13M	13	210	1000	2000	3/4"	1/2"
DFM-30*A-14M	14.3	210	1000	2000	3/4"	1/2"
DFM-30*A-17M	16.5	210	1000	2000	3/4"	1/2"
DFM-30*A-19M	19.2	210	1000	2000	3/4"	1/2"
DFM-30*A-23M	23	210	1000	2000	3/4"	1/2"
DFM-30*A-25M	25	210	1000	2000	1"	3/4"
DFM-30*A-28M	28	210	1000	2000	1"	3/4"
DFM-30*A-30M	30	210	1000	2000	1"	3/4"
DFM-30*A-35M	35	210	1000	2000	1"	3/4"

* The initial pressure : 30kgf/cm²

Model	Weight (kg)					
	302A	303A	304A	305A	306A	307A
4M	4.64	6.75	8.86	10.97	13.08	15.19
6M	4.80	6.99	9.18	11.37	13.56	15.75
8M	4.96	7.23	9.50	11.77	14.04	16.31
11M	5.26	7.68	10.10	12.52	14.94	17.36
13M	5.46	7.98	10.50	13.02	15.54	18.06
14M	5.58	8.16	10.75	13.32	15.9	18.48
17M	5.83	8.52	11.18	13.87	16.56	19.25
19M	6.04	8.85	11.66	14.47	17.28	20.09
23M	6.41	9.45	12.46	15.47	18.48	21.49
25M	6.54	9.60	12.66	15.72	18.78	21.84
28M	6.76	9.93	13.10	16.27	19.44	22.61
30M	6.96	10.23	13.50	16.77	20.04	23.31
35M	7.48	11.01	14.54	18.07	21.60	25.13

DIMENSIONS (unit : mm)
DFM-302A

DFM-303A

DFM-304A

DFM-305A


DIMENSIONS (unit : mm)
DFM-306A

DFM-307A


Model	A	B					
		302A	303A	304A	305A	306A	307A
4M	49	250	344	438	532	626	720
6M	52	256	353	450	547	644	741
8M	55	262	362	462	562	662	762
11M	60	272	377	482	587	692	797
13M	64	280	389	498	607	716	825
14M	66	284	395	506	617	728	839
17M	70	292	407	522	637	752	867
19M	74	300	419	538	657	776	895
23M	81	314	440	566	692	818	944
25M	84	320	449	578	707	836	965
28M	88	328	461	594	727	860	993
30M	92	336	473	610	747	884	1021
35M	102	356	503	650	797	944	1091