

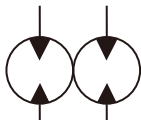
DFM-502A DFMN-502A

- Displacement : 40~90 cc/rev
- Max. Pressure : 210 kgf/cm²
(3000psi)

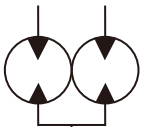


DFMN-502A-M

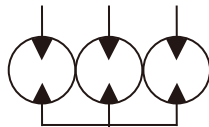
SCHEMATIC SYMBOL



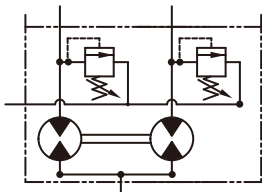
DFM-502A



DFMN-502A

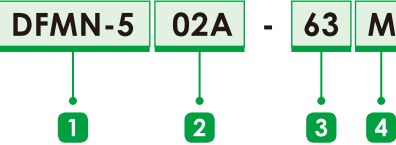


DFMN-503A



DFMN-502A-MOR

ORDER CODES

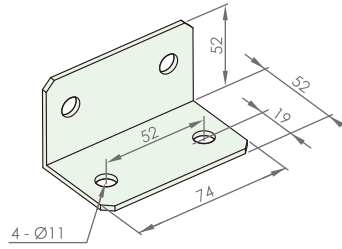
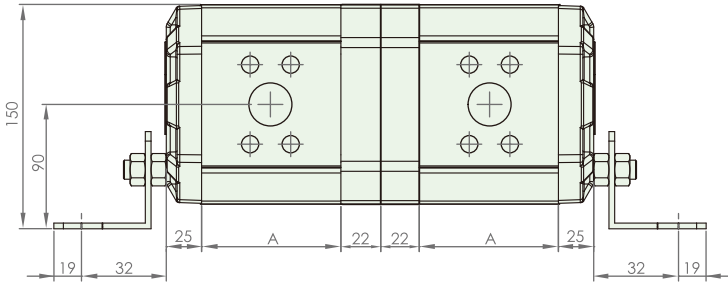


1 Model Name	DFM-5, DFMN-5	
2 Stations	02A	2 stations
	03A	3 stations
	04A	4 stations
	05A	5 stations
	06A	6 stations
	07A	7 stations
	3 Flow Rate	40, 50, 55, 63, 75, 80, 90
4 Functional Type	M	synchronous flow divider
	MOR	with external drain relief valve

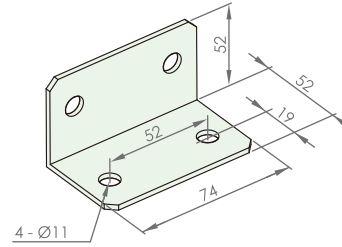
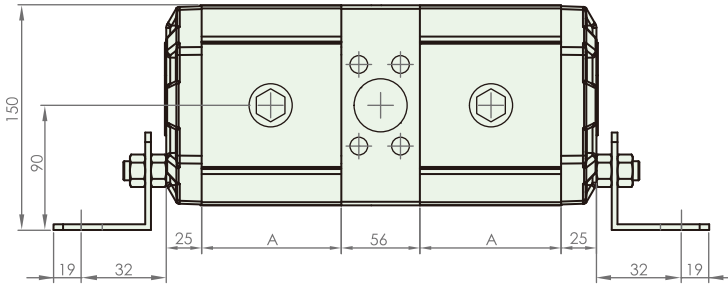
SPECIFICATIONS

Model	Accurate Displacement Capacity (cc/rev)	Operational Pressure (kgf/cm ²)	Speed (r.p.m.)	
			Loaded	Unloaded
DFM, DFMN-50*A-40	40	210	1000	2000
DFM, DFMN-50*A-50	50	210	1000	2000
DFM, DFMN-50*A-55	55	210	1000	2000
DFM, DFMN-50*A-63	63	210	1000	2000
DFM, DFMN-50*A-75	75	210	1000	2000
DFM, DFMN-50*A-80	80	210	1000	2000
DFM, DFMN-50*A-90	90	210	1000	2000

* The initial pressure : 30kgf/cm²

DIMENSIONS (unit : mm)
DFM-502A


Model	502A
DFM, DFMN	
40M	92
50M	102
55M	92
63M	98
75M	106
80M	110
90M	117

DFMN-502A

ADDITIONAL DIMENSION (unit : mm)
Inlet and Outlet Size
