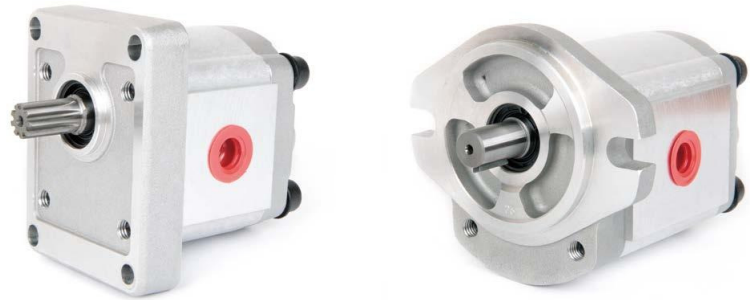
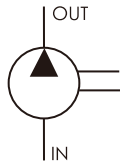


HGP-3A

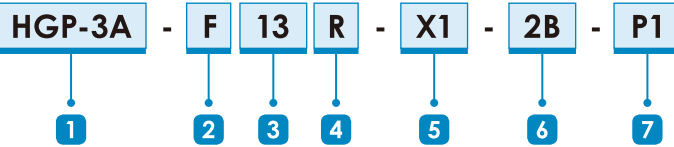
- ▶ Displacement : 4~35 cc/rev
- ▶ Max. Pressure : 250 kgf/cm²
(3500psi)
- ▶ Flange : SAE 2-bolt, DIN 4-bolt,
European 4-bolt



SCHEMATIC SYMBOL



ORDER CODES



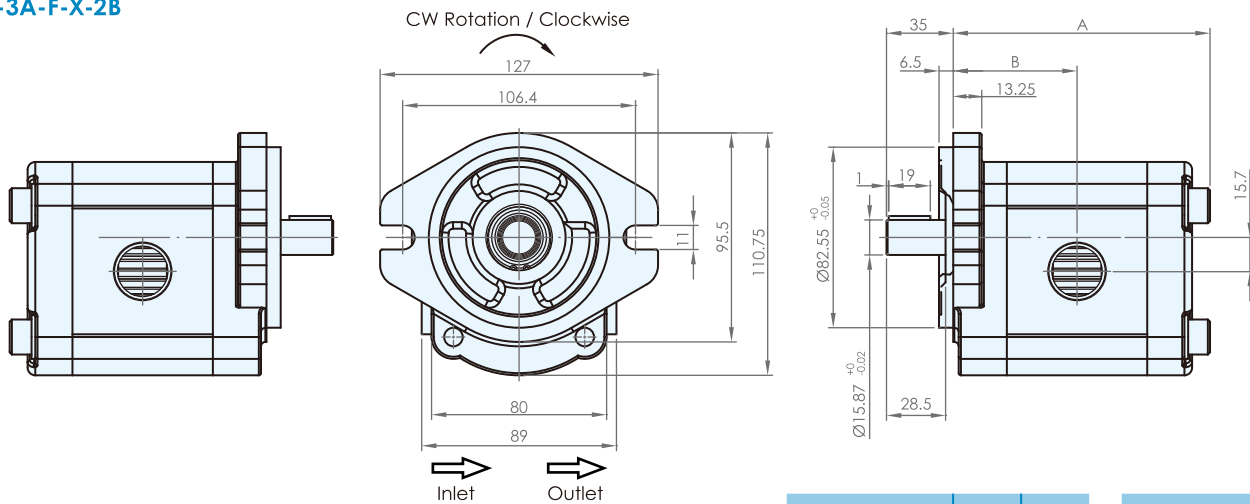
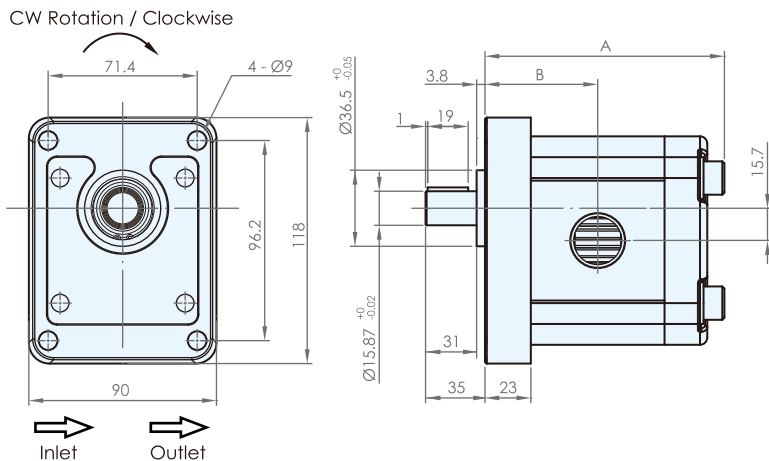
1 Model Name	HGP-3A	
2 Mounting	F	flange type
	L	foot type
3 Delivery Capacity	4, 6, 8, 11, 13, 14, 17, 19, 23, 25, 28, 30, 33, 35	
4 Rotation Direction	R	clockwise
	L	counter - clockwise
	M	hydraulic motor *
5 Shaft Type *	X: straight shaft Y: spline shaft Z: taper shaft	
6 Flange Mounting Type	2B	SAE 2-bolt
	4BD	DIN 4-bolt
	4BE	European 4-bolt
7 Inlet and Outlet *	F: flange type(F1~F6) G: PF, G, BSPP(G1~G2) P: PT(P1~P2) N: NPT(N1~N2) U: UNF(U1~U2)	

* The dimension of shafts and inlet & outlet sizes please refer to Page 19.

* Please contact the local distributors to obtain the specifications of hydraulic motors.

SPECIFICATIONS

Model	Accurate Displacement Capacity (cc/rev)	Operational Pressure (kgf/cm ²)	Max. Pressure (kgf/cm ²)	Speed (r.p.m.)			Weight (kg)
				Rate	Max.	Min.	
HGP-3A-4	4	210	250	1800	4000	700	2.29
HGP-3A-6	6	210	250	1800	4000	700	2.37
HGP-3A-8	8.4	210	250	1800	3500	700	2.45
HGP-3A-11	11	210	250	1800	3000	600	2.60
HGP-3A-13	13	210	250	1800	3000	600	2.70
HGP-3A-14	14.3	210	250	1800	3000	500	2.76
HGP-3A-17	16.5	210	250	1800	3000	500	2.87
HGP-3A-19	19.2	210	250	1800	3000	500	2.99
HGP-3A-23	23	210	250	1800	3000	500	3.19
HGP-3A-25	25	175	210	1800	2800	500	3.24
HGP-3A-28	28	175	210	1800	2500	500	3.35
HGP-3A-30	30	175	210	1800	2500	500	3.45
HGP-3A-33	33	140	175	1200	2500	500	3.60
HGP-3A-35	35	125	140	1200	2500	500	3.71

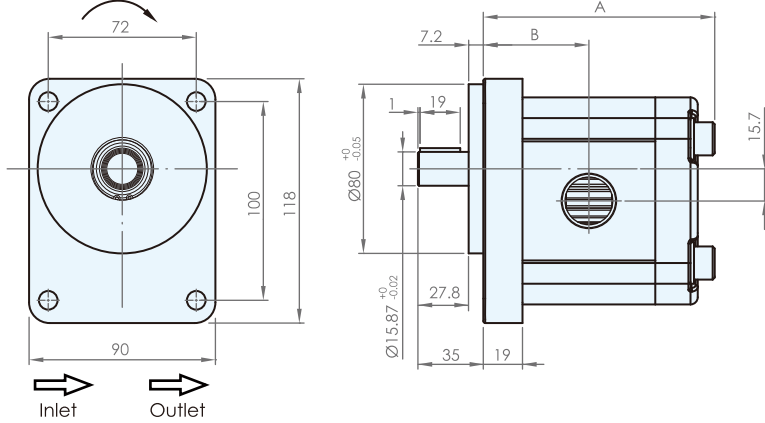
DIMENSIONS (unit : mm)
HGP-3A-F-X-2B

HGP-3A-F-X-4BE


Model	A	B	Model	A	B
HGP-3A-4-4BE	101	46.5	HGP-3A-4-2B	101	48.5
HGP-3A-6-4BE	105	48	HGP-3A-6-2B	105	50
HGP-3A-8-4BE	109	49.5	HGP-3A-8-2B	109	51.5
HGP-3A-11-4BE	113	52	HGP-3A-11-2B	113	54
HGP-3A-13-4BE	117	54	HGP-3A-13-2B	117	56
HGP-3A-14-4BE	119	55	HGP-3A-14-2B	119	57
HGP-3A-17-4BE	123	57	HGP-3A-17-2B	123	59
HGP-3A-19-4BE	127	59	HGP-3A-19-2B	127	61
HGP-3A-23-4BE	134	63	HGP-3A-23-2B	134	65
HGP-3A-25-4BE	137	64	HGP-3A-25-2B	137	66
HGP-3A-28-4BE	141	66	HGP-3A-28-2B	141	68
HGP-3A-30-4BE	145	68	HGP-3A-30-2B	145	70
HGP-3A-33-4BE	150	71	HGP-3A-33-2B	150	73
HGP-3A-35-4BE	154	73	HGP-3A-35-2B	154	75

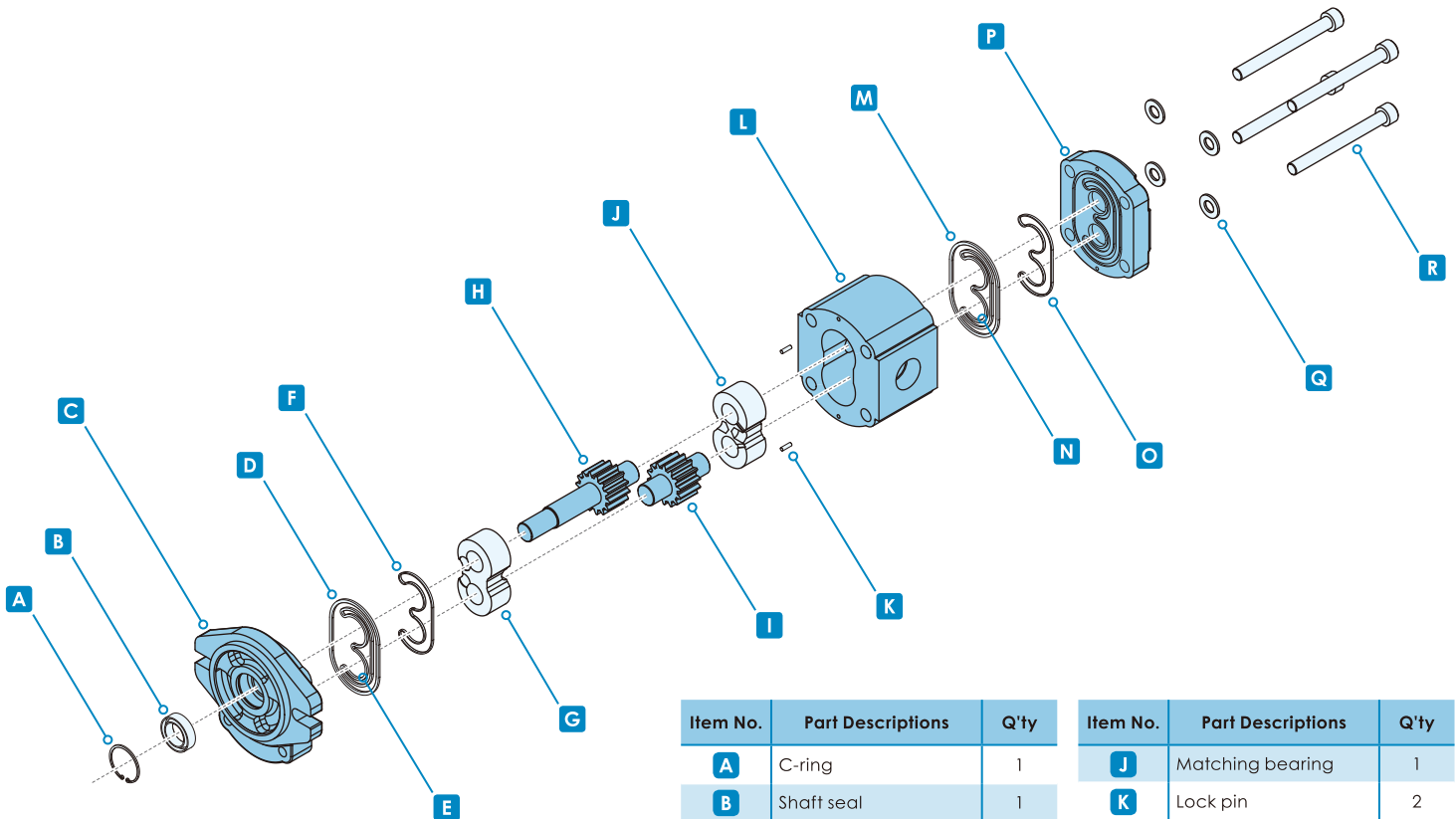
DIMENSIONS (unit : mm)

HGP-3A-F-X-4BD

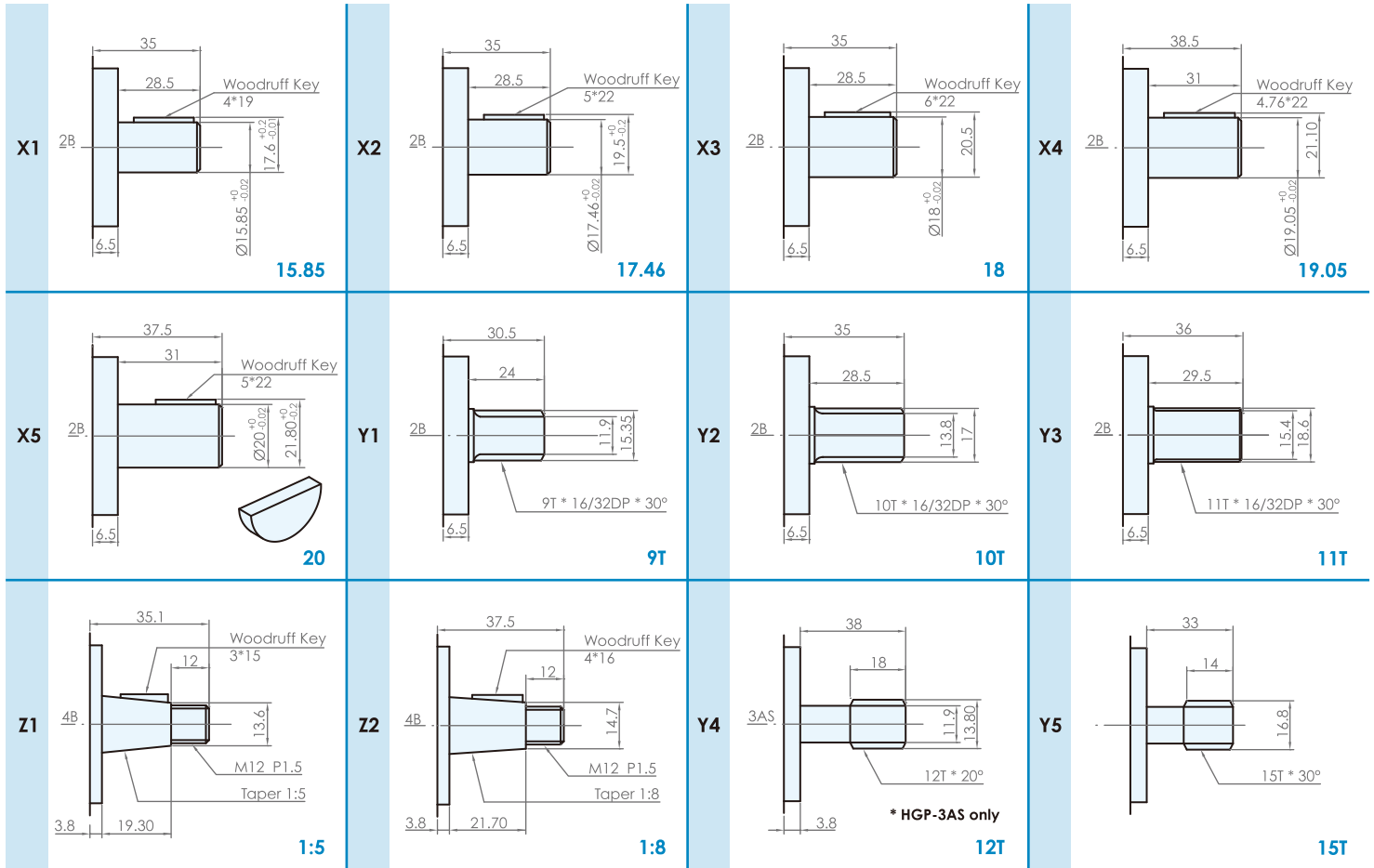
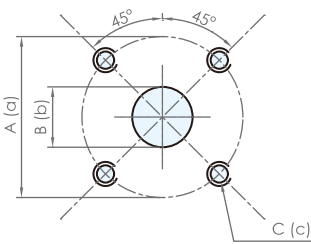
CW Rotation / Clockwise



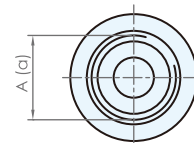
Model	A	B
HGP-3A-4-4BD	101	43.5
HGP-3A-6-4BD	105	45
HGP-3A-8-4BD	109	46.5
HGP-3A-11-4BD	113	49
HGP-3A-13-4BD	117	51
HGP-3A-14-4BD	119	52
HGP-3A-17-4BD	123	54
HGP-3A-19-4BD	127	56
HGP-3A-23-4BD	134	60
HGP-3A-25-4BD	137	61
HGP-3A-28-4BD	141	63
HGP-3A-30-4BD	145	65
HGP-3A-33-4BD	150	68
HGP-3A-35-4BD	154	70

DECOMPOSITION CHARTS


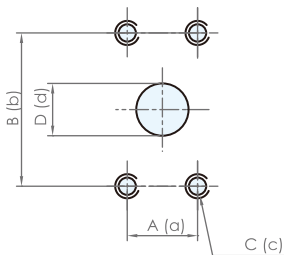
Item No.	Part Descriptions	Q'ty	Item No.	Part Descriptions	Q'ty
A	C-ring	1	J	Matching bearing	1
B	Shaft seal	1	K	Lock pin	2
C	Front cover	1	L	Housing	1
D	O-ring	1	M	O-ring	1
E	Back-up ring	1	N	Back-up ring	1
F	Bush lobe seal	1	O	Bush lobe seal	1
G	Matching bearing	1	P	Rear cover	1
H	Drive gear	1	Q	Bolt washer	4
I	Driven gear	1	R	Bolt	4

ADDITIONAL DIMENSION (unit : mm)
Dimension of Shaft

Inlet and Outlet Size

Flange Type

Code	Inlet			Outlet		
	A	B	C	a	b	c
F1	40	18.5	M6	35	14.5	M6
F2	40	18.5	M8	30	14.5	M6
F3	40	18.5	M8	40	14.5	M8


UNF

Code	Inlet	Outlet
	A	a
U1	1 1/16"-12UNF	7/8"-14UNF
U2	1 5/16"-12UNF	1 1/16"-12UNF


Flange Type

Code	Inlet				Outlet			
	A	B	C	D	a	b	c	d
F4	17.48	38.1	5/16"-18UNC	14.5	17.48	38.1	5/16"-18UNC	14.5
F5	22.23	47.63	3/8"-16UNC	18.5	17.48	38.1	5/16"-18UNC	14.5
F6	26.2	52.4	3/8"-16UNC	24	22.23	47.63	3/8"-16UNC	18.5

* UNC : Unified Coarse Thread

PF (G, BSPP)

Code	Inlet	Outlet
	A	a
G1	G 3/4"	G 1/2"
G2	G 1"	G 3/4"

PT (BSPT)

Code	Inlet	Outlet	Applicable Model
	A	a	
P1	3/4" PT	1/2" PT	3A-4 ~ 23
P2	1" PT	3/4" PT	3A-25 ~ 35

NPT

Code	Inlet	Outlet	Applicable Model
	A	a	
N1	3/4" NPT	1/2" NPT	3A-4 ~ 23
N2	1" NPT	3/4" NPT	3A-25 ~ 35

