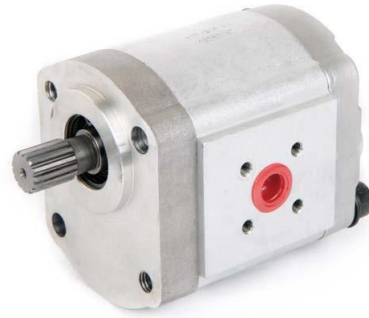
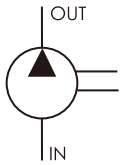


HGP-3A2D

- Displacement : 4~35 cc/rev
- Max. Pressure : 250 kgf/cm²
(3500psi)



SCHEMATIC SYMBOL



ORDER CODES

HGP-3A2D - **F** **13** **R** - **Y4** - **P1**

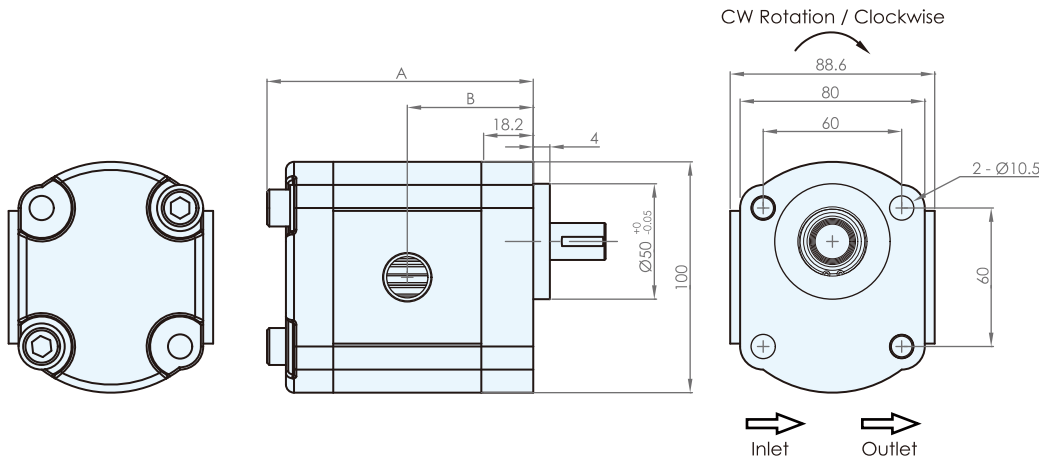
1
2
3
4
5
6

1 Model Name	HGP-3A2D	
2 Mounting	F	flange type
	L	foot type
3 Delivery Capacity	4, 6, 8, 11, 13, 14, 17, 19, 23, 25, 28, 30, 33, 35	
4 Rotation Direction	R	clockwise
	L	counter - clockwise
5 Shaft Type *	X: straight shaft Y: spline shaft Z: taper shaft	
6 Inlet and Outlet *	F:	flange type(F1~F6)
	G:	PF, G, BSPP(G1~G2)
	P:	PT(P1~P2)
	N:	NPT(N1~N2)
	U:	UNF(U1~U2)

* The dimension of shafts and inlet & outlet sizes please refer to Page 19.

SPECIFICATIONS

Model	Accurate Displacement Capacity (cc/rev)	Operational Pressure (kgf/cm ²)	Max. Pressure (kgf/cm ²)	Speed (r.p.m.)			Weight (kg)
				Rate	Max.	Min.	
HGP-3A2D-4	4	210	250	1800	4000	700	2.09
HGP-3A2D-6	6	210	250	1800	4000	700	2.17
HGP-3A2D-8	8.4	210	250	1800	3500	700	2.25
HGP-3A2D-11	11	210	250	1800	3000	600	2.40
HGP-3A2D-13	13	210	250	1800	3000	600	2.50
HGP-3A2D-14	14.3	210	250	1800	3000	500	2.56
HGP-3A2D-17	16.5	210	250	1800	3000	500	2.67
HGP-3A2D-19	19.2	210	250	1800	3000	500	2.79
HGP-3A2D-23	23	210	250	1800	3000	500	2.99
HGP-3A2D-25	25	175	210	1800	2800	500	3.04
HGP-3A2D-28	28	175	210	1800	2500	500	3.15
HGP-3A2D-30	30	175	210	1800	2500	500	3.25
HGP-3A2D-33	33	140	175	1200	2500	500	3.40
HGP-3A2D-35	35	125	140	1200	2500	500	3.51

DIMENSIONS (unit : mm)


Model	A	B
HGP-3A2D-4	95.9	42.7
HGP-3A2D-6	98.9	44.2
HGP-3A2D-8	101.9	45.7
HGP-3A2D-11	106.9	48.2
HGP-3A2D-13	110.9	50.2
HGP-3A2D-14	112.9	51.2
HGP-3A2D-17	116.9	53.2
HGP-3A2D-19	120.9	55.2
HGP-3A2D-23	127.9	58.7
HGP-3A2D-25	130.9	60.2
HGP-3A2D-28	134.9	62.2
HGP-3A2D-30	138.9	64.2
HGP-3A2D-33	144.9	67.2
HGP-3A2D-35	148.9	69.2