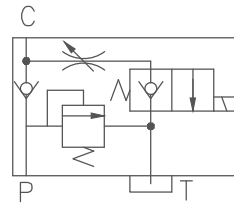


# V2073-GT3/L00 (HSV08)

## Graphic Symbol

## 繪圖符號



## Ordering Code

型號說明 V2073 1 GT3 2 @ 3 # 4 \* 5 D24 6 DG 7 25 8

1

**Cartridge solenoid check valve**  
插入式電磁止回閥

V2073(08W-2) 二口二位 Poppet 2-way

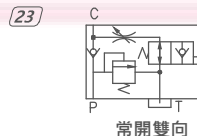
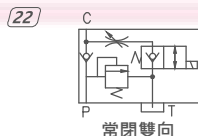
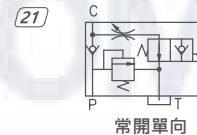
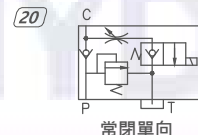
2

**Manifold type**  
油路塊總類選項

GT3:3分板管式安裝  
L00:3分板管式安裝

3

**Operation**  
油路方向功能選項



4

**Option: with filter**  
附濾網裝置選項

S: With Filter 有濾網  
N: Without Filter 無濾網

5

**Option: with manual**  
附手動輔助裝置選項

P: Push-style Manual Override  
P: 推 (向外推移式)  
N: Option  
N: 標準(輔助裝置不可調)

M: Screw-out Konb Style  
M: 旋鈕式(開) 逆時鐘方向 ↺  
Screw-in Konb Style  
旋鈕式(開) 順時鐘方向 ↻

T: Push and Twist Style  
T: 推桿附扭轉  
Manual Override  
固定轉助裝置

6

**Coil type**  
線圈型式

D12: DC12V D24: DC24V A24: AC24V A11: AC110V  
A22: AC220V A38: AC380V RA1: AC110V RA2: AC220V

7

**Terminations**  
接線方式

DG: DIN43650 插頭式  
DL: Lead wires(2) 出線2條式

8

**Max pressure**  
最高壓力

25: 250bar(3500psi)

# CARTRIDGE SOLENOID CHECK VALVE

## 插入式電磁止回閥

V2073-GT3/L00 (HSV08)

### Technical Data

技術參數

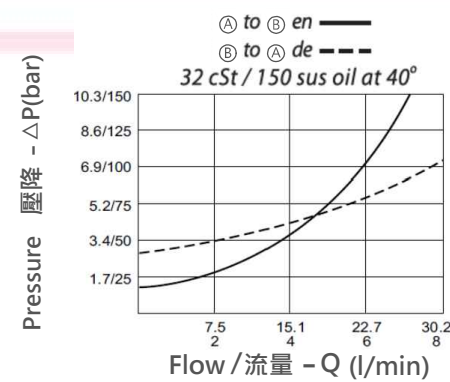
Max. Operating Pressure 最高壓力	Rated Flow 額定流量	Cavity-Tooling 成型孔	Installation Torque 安裝扭矩	Weight 重量
bar (psi)	l / min		(Nm)	(kg)
250 (3500)	23	08W-2	39-51	0.92

Fluids-Temperatures 使用油溫範圍	Internal Leakage 最大內漏量	Filtration 過濾精度	Minimun Voltage Required 線圈需要的最低電壓
(°C)	0.25cc/minute	(um)	
-40~120°C	(5 drops/minute) max. at 250 bar (5滴/每分) 壓降250bar時	25	90% of nominal 額定電壓的90%

### Specifications

技術數據

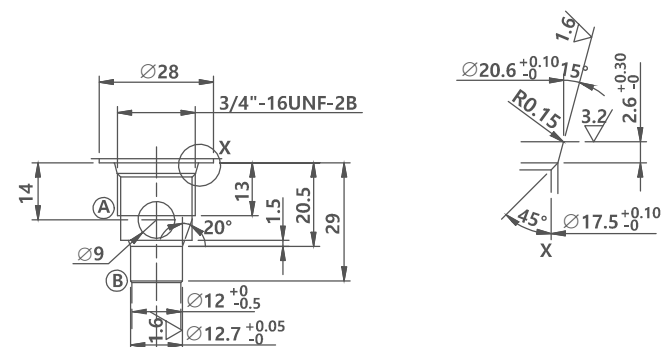


### Cavity-Tooling

成型孔

Millimeters (m/m)

0.03  
0.02



### Dimension

外型尺寸圖

Millimeters / (inch)

