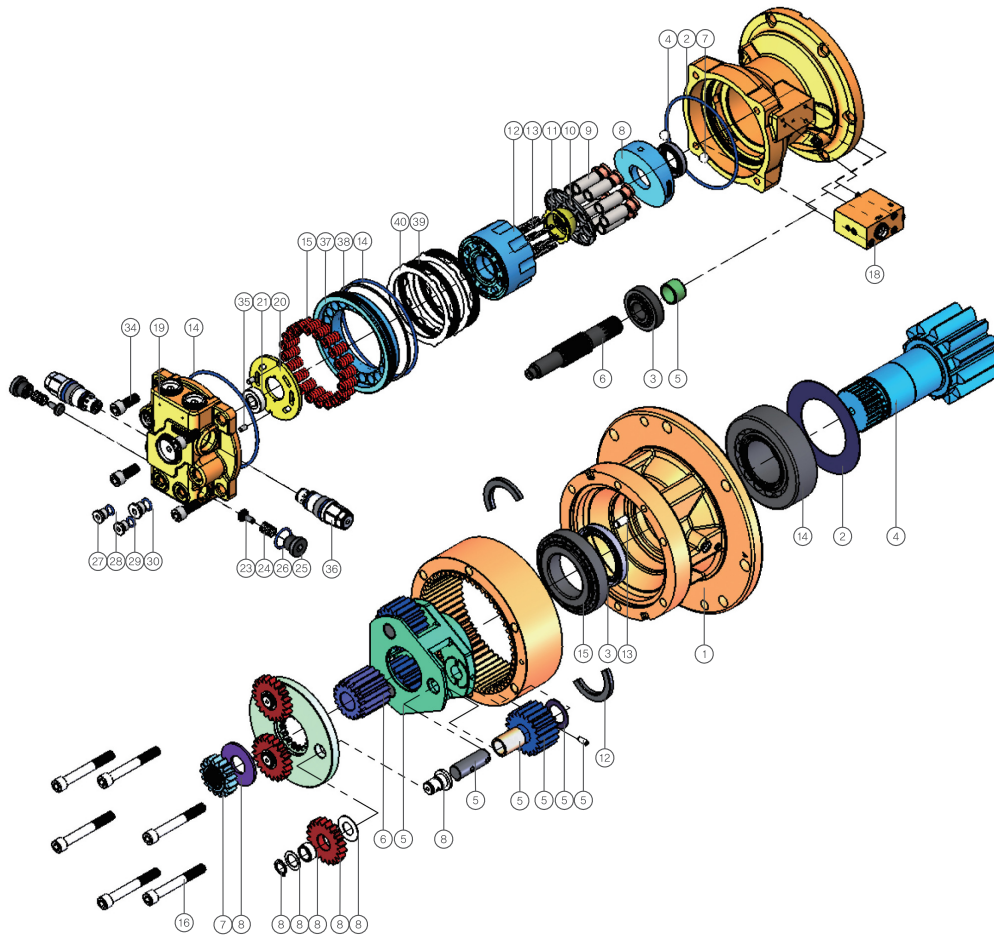


5 _ 8 TON SWING DEVICE



Reduction Gear

NO.	Name	DOBN	EA	Remarks
1	GEAR CASE	KSR2-202004	1	
2	COVER(BEARING)	KSR1-321005	1	
3	OIL SEAL	K901-TC659013	1	TC65X90X13
4	DRIVE SHAFT	KSR2-319006	1	
5	CARRIER ASS'Y(NO.2)	KSR1-000008	1	
6	SUN GEAR(NO.2)	LSR1-331016	1	
7	SUN GEAR(NO.1)	KSR1-331025	1	
8	CARRIER ASS'Y(NO.1)	KSR1-000017	1	
9	RING GEAR	KSR1-331015	1	
10	PIPE PLUG	K911-PT 1/8	2	PT 1/8
11	PIPE PLUG	K911-PT 3/8	1	PT 3/8
12	HALF COLLAR	KSR1-333007	2	
13	PARALLEL PIN	K905-D10022	2	Ø10X22
14	TAPER POLLER BEARING	K909-HR32313J	2	HR30212J
15	TAPER POLLER BEARING	K909-HR30213J	1	HR30212J
16	SOC.HD CAP SCREW	K907-SM12095	6	X12 x 95

Motor

NO.	Name	DOBN	EA	Remarks
1	HOUSING	KSM1-201004	1	
2	O-RING	K903-001A252	1	AS568-252
3	TAPER ROLLER BEARING	K909-HR30305J	1	HR30305J
4	OIL SEAL	K910-TCV1709	1	30X50X11(TCV1709)
5	BUSH	K919-253020	1	IR25X30X20
6	SHAFT	KSM1-319005	1	
7	STEEL BALL	K917-5/16"	2	5/16"

NO.	Name	DOBN	EA	Remarks
8	SWASH PLATE	KSM3-207007	1	17.5°
9	PISTON ASS'Y	KSM1-000008	9	
10	RETAINER	KSM1-312011	1	
11	PIVOT	KSM1-325012	1	
12	CYLINDER BLOCK	KSM1-215016	1	
13	SPRING	KSM1-314017	9	
14	O-RING	K903-001A254	2	AS568-254
15	SPRING	KSM1-314020	20	
16	PIPE PLUG	K911-PT1/2	1	PT 1/2
17	PIPE PLUG	K911-PT1/4	2	PT 1/4
18	TIME DELAY VALVE ASSY	KSM1-000049	1	
19	REAR CASE	KSM1-202031	1	
20	VALVE PLATE	KSM1-324032	1	
21	TAPER ROLLER BEARING	K909-30202	1	#30202
22	SHIM(TAPER BEARING)	KSM1-327033	1	
23	POPPET	KSM1-303046	2	
24	SPRING	KSM1-314047	2	
25	PLUG	KSM1-308048	2	
26	O-RING	K903001ID026	2	ID26X2.5
27	RO PLUG	K914-PF1/4	2	PF 1/4
28	O-RING	K903-002P011	2	P011
29	RO PLUG	K914-PF3/8	1	PF 3/8
30	O-RING	K903-002P014	1	P014
34	SOC.HD CAP SCREW	K907-SM12030	4	M12 x 30
35	PARALLEL PIN	K905-D06012	2	Ø6X12
36	RELIFE VALVE ASS'Y	KSM1-000060	2	
37	BRAKE PISTON	KSM1-216019	1	
38	BACK UP RING	K916-00A254	1	AS568-254
39	FRICITION PLAT E ASS'Y	KSM1-000013	2	
40	SEPARATER PLATE	KSM1-404014	2	