

KP2D25(W)-GP1 /KP2D28D(W)-GP2

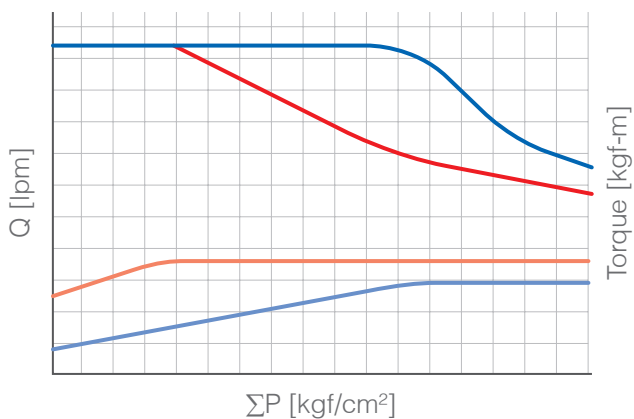
Piston Type Main pump for excavator

Ordering code

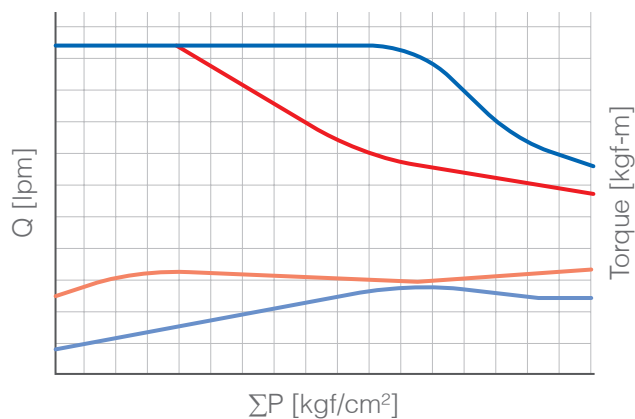
SERIES	KP2D
SIZE	25
Displacement 25cc 25 27.3cc 28 36cc 36	
Option Sol V/V Blank : With out S : With	S
Option Wheel Blank : With out W : With	W
Gear Pump GP1 16.2 + 4.5cc GP2 18.3 + 4.5cc GP3 12.1 + 6.5cc GP4 6.5cc GP5 16.2 + 6.5cc GP6 18.3 + 6.5cc	GP1



KP2D25(W)-GP1



KP2D28D(W)-GP2



SPECIFICATIONS

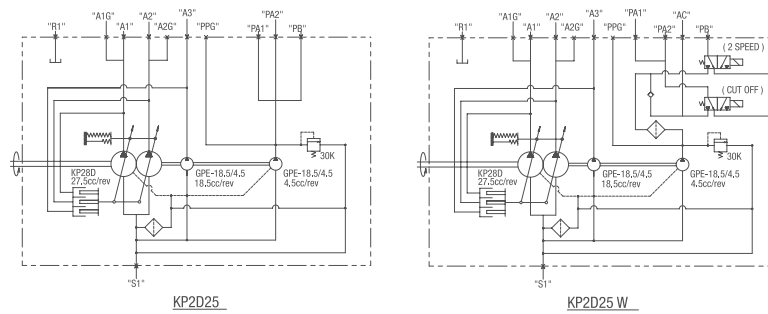
Model	Displacement (cm ³ / rev)				Rated pressure (kgf/cm ²)	flow (l/min)	Max speed for self priming (rpm)	Max input torque (kgf-m)	Application (ton)
	A1	A2	A3	A4					
KP2D25(W)-GP1	25	25	16.2	4.5	220	55 X 2	2200	14	7
KP2D28D(W)-GP2	27.3	27.3	18.2	4.5	220	61.6 X 2	2200	14	7

CHARACTERISTICS

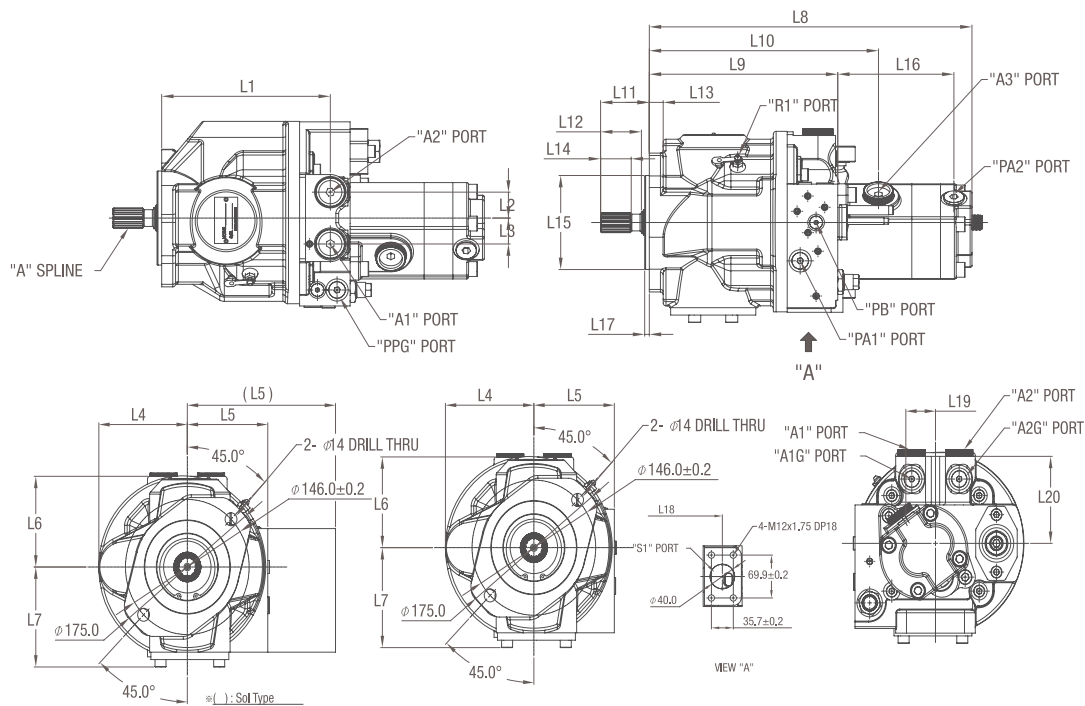
- Specialized Main pump for mini Excavator, especially 5~7 ton.
- Undersized and Easy to attach.

- Compact and Suitable for Zero Tail type.
- Having a high level of efficiency Itself and easy to operate.

CIRCUIT DIAGRAM



DIMENSIONS



"A" SPLINE

No. of teeth	N	13
Module	M	16/32
Pres.Angle	α	30
Diameter	d	$\varnothing 20.6375$
Type of teeth	-	Flat root side fit

PORT SIZE

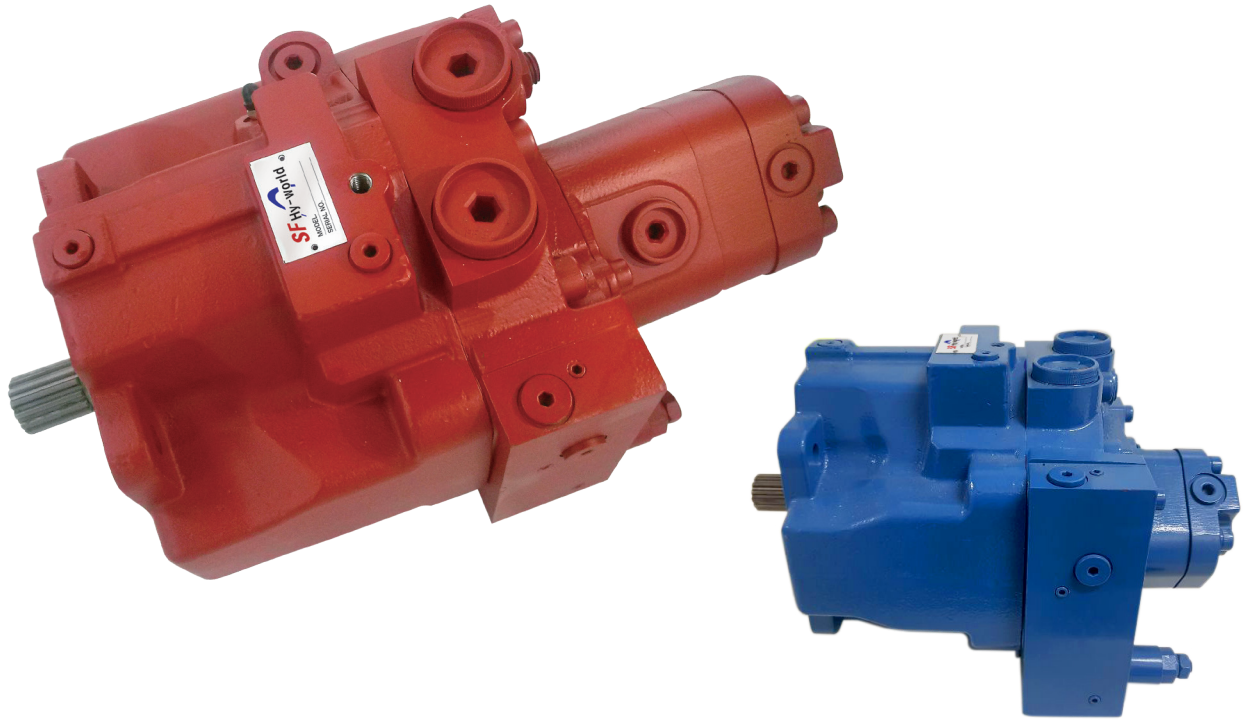
Port size	Description	Port
SAE A 1-1/2	Input port	S1
PF 1/2	Output port	A1, A2, A3
PF 3/8	Output port	PA2
PF 1/4	Output port	PA2
	Gauge port	A1G, A2G, PPG
PF 1/8	Output port	PB
M10 X P1.0	Air port	R1

DIMENSIONS

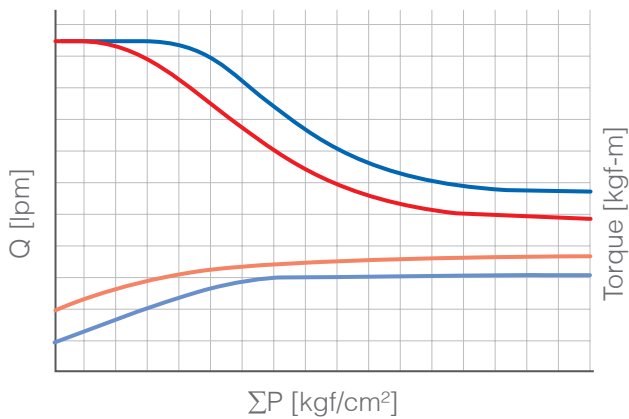
L1	L2	L3	L4	L5	(L5)	L6	L7	L8	L9	L10
182.2	28.0	28.0	109.3	90.1	162	102.9	103.1	348.6	203.6	247.3
L11	L13	L14	L15	L16	L17	L20				
52.7	15	33	101.6	129.2	5	98				

KP2D36

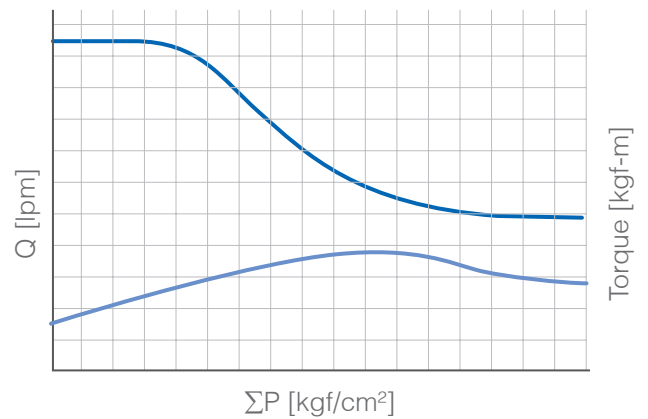
Piston Type Main pump for excavator



KP2D36-GP3



KP2D36-GP4



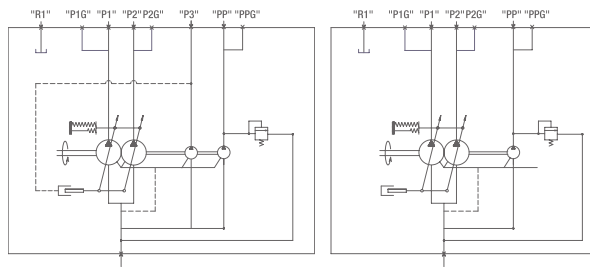
SPECIFICATIONS

Model	Displacement (cm ³ / rev)				Rated pressure (kgf/cm ²)	flow (l/min)	Max speed for self priming (rpm)	Max input torque (kgf-m)	Application (ton)
	A1	A2	A3	A4					
KP2D36-GP3	37	37	12.1	6.5	280	74 X 2	2000	17.8	8
KP2D36-GP4	37	37	-	6.5	280	74 X 2	2000	13.5	8

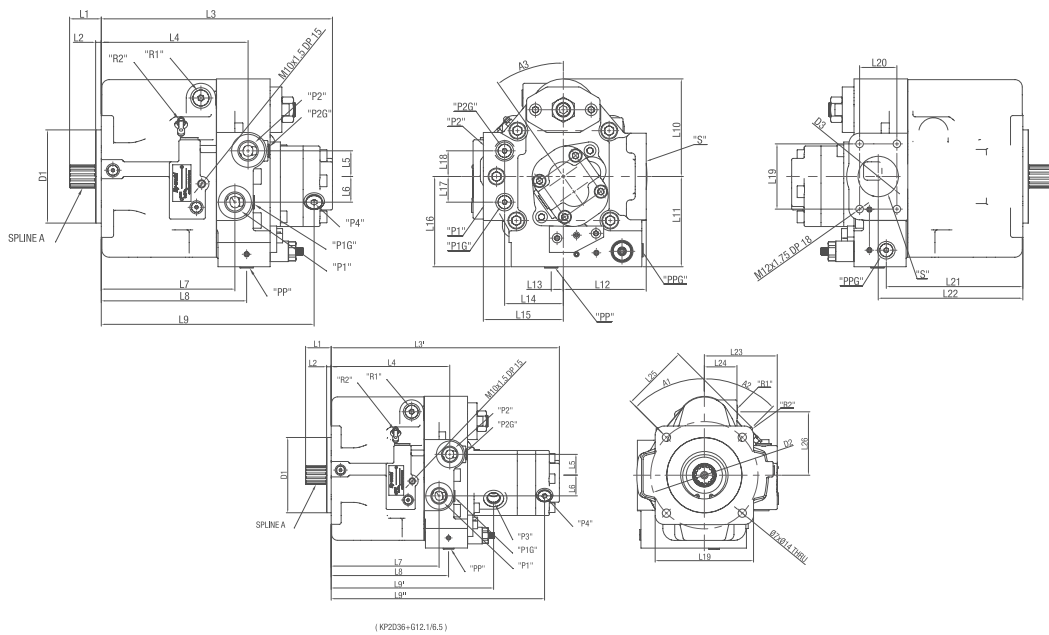
CHARACTERISTICS

- Specialized Main pump for mini Excavator, especially 8 ton.
- Compact and Suitable for Zero Tail type.
- Undersized and Easy to attach.
- Having a high level of efficiency Itself and easy to operate.

CIRCUIT DIAGRAM



DIMENSIONS



"A" SPLINE

No. of teeth	N	14
Module	M	12/24
Pres.Angle	α	30
Diameter	d	$\varnothing 29.633$
Diameter	D	$\varnothing 31.2$
Type of teeth	-	Flat root side fit

PORT SIZE

Port size	Description	Port
SAE A 2-1/2	Input port	S
PF 3/4 O-ring Type	Output port	P1, P2
PF 3/8 O-ring Type	Drain port	R1
	Output port	P4
PF 1/4 O-ring Type	Output port	PP
	Gauge port	PPG, P1G, P2G
PF 1/2 O-ring Type	Output port	P3

DIMENSIONS

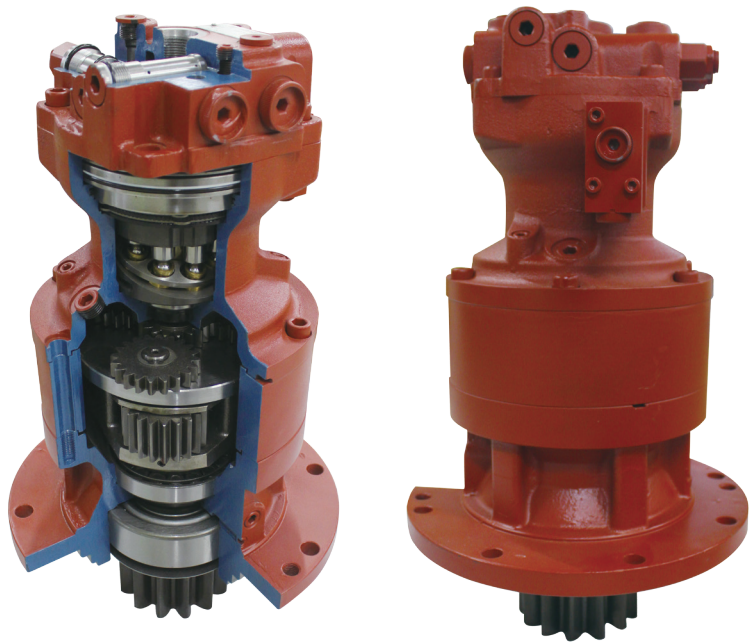
D1	D2	D3	A1	A2	A3	L1	L2	L3	L3'	L4	L5
$\varnothing 127$	$\varnothing 181$	$\varnothing 55$	45°	45°	35°	43.2	7.7	315.1	385.1	200.1	35.0
L6	L7	L8	L9	L9'	L9''	L10	L11	L12	L13	L14	L15
35.0	182.1	198.1	290.1	274.1	360.1	133.0	123.0	113.0	16.5	80.0	109.0
L16	L17	L18	L19	L20	L21	L22	L23	L24	L25	L26	
123.0	35.0	35.0	88.9	50.8	186.1	197.1	123.0	55.0	113.6	107.0	

KSD 29/33/43

Swing Device

Ordering code

SERIES	KMS
SIZE	43
Displacement	
28.9cc	29
33.0cc	33
43.0cc	43
Option Valve	W
Blank : With out	
S : With	
Reduction Gear & Torque	RG02



SPECIFICATIONS

Model	REDUCTION GEAR RATIO	GEAR SPEC		Displacement (cc/rev)	Max. output torque (kgf.m)[kN.m]	Relief Valve (kgf/cm ² [MPa])
		MODULE	NO OF TOOTH			
KMS29	i=19.464	7	13	28.9	215[2105]	210±5[20.6]
KMS43	i=19.464	8	12	43	293[2873]	235±5[23.0]

CHARACTERISTICS

- Time delay valve & Relief valve
- Included time delay valve and relief valves
- Mini(5~8ton) excavator, Aerial working flatform, Crane, etc. Applicable

CIRCUIT DIAGRAM

