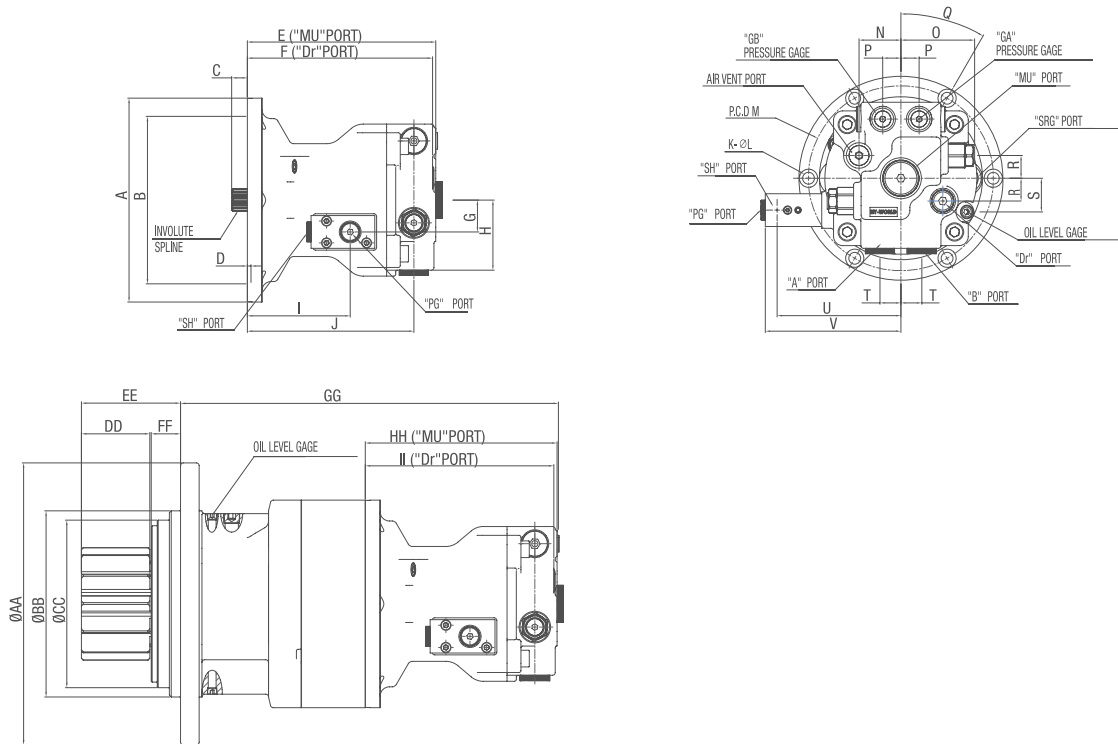


DIMENSIONS



PORT SIZE

Port size	Type	Port
PF 1/2	O-ring Type	A, B
PF 3/4	O-ring Type	MU
PF 3/8	O-ring Type	Air Vent, Dr
PF 1/4	O-ring Type	GA, GB, SH, PG
PT 1/2	-	SRG
PT 1/4	-	Level Gage

DIMENSIONS

Division	A	B	C	D	E	F	G	H	I	J	K
5~7 ton	224.0	184.0	17.3	4.0	207.0	203.5	35.0	77.0	113.0	183.0	6.0
8~10 ton											
Division	L	M	N	O	P	Q	R	S	T	U	V
5~7 ton	18.0	203.0	46.0	81.0	20.0	30.0	25.0	37.0	23.0	168.0	149.0
8~10 ton											
Division	AA	BB	CC	DD	EE	FF	GG	HH	II		
5~7 ton	303	200	180	73.5	98.2	31.5	406	207.0	203.5		
8~10 ton					106.5						

INVOLRUTE SPLINE SPEC

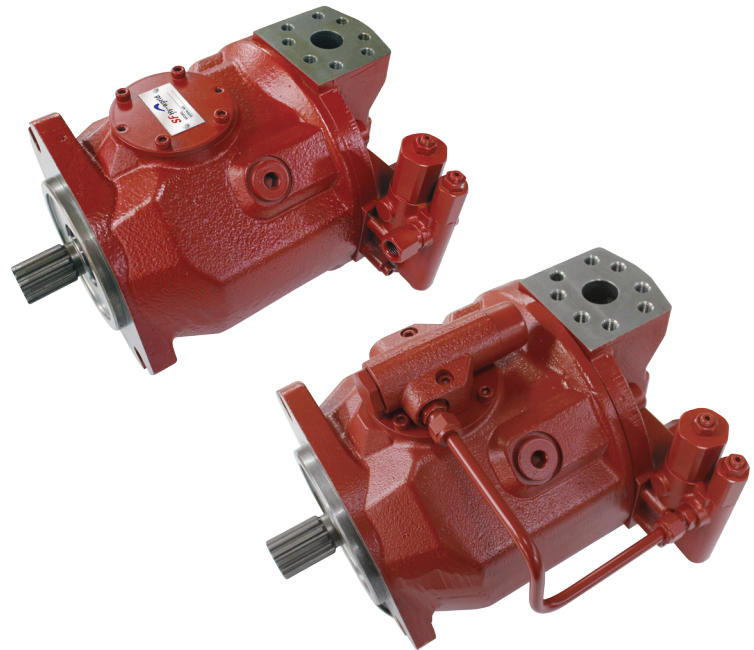
NUMBER OF TEETH	15.0	PITCH DIAMETER	Ø23.813
PITCH	16/32	MAJOR DIAMETER	Ø24.8
PRESSUER ANGLE	30 °	MINER DIAMETER	Ø21.336

K10V Series

(A10V)

Ordering code

SERIES	K10V
SIZE Displacement 71cc 71	71
Control devices Pressure-and flow control DFR Pressure-and flow, Torque control DFRL	DFR
Direction of rotation Clockwise	R
Design Number	10



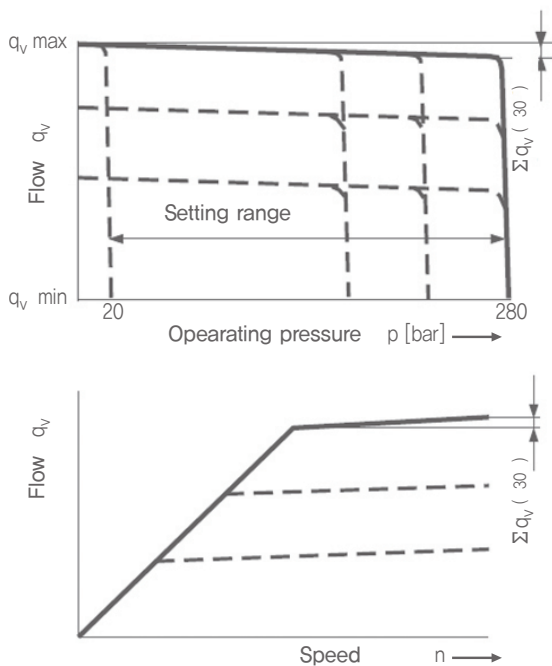
SPECIFICATIONS

Model	Displacement (m ³ /rev)			Rated pressure (kgf/cm ²)	Rated pressure (kgf/cm ²)			Max speed (rpm)	Max input torque (kgf-m) Δp=280 bar	Application (ton)
	A1	A2	A3		A1	A2	A3			
K10V71 DFR	71	-	-	280	156	-	-	2200	32.5	8
K10V71 DFRL	71	-	10	280	156	-	20	2200	32.5	8

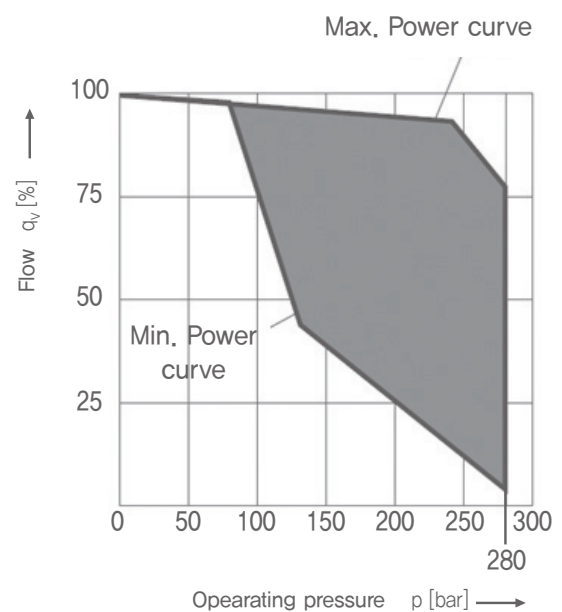
STATIC CHARACTERISTIC

DFR TYPE

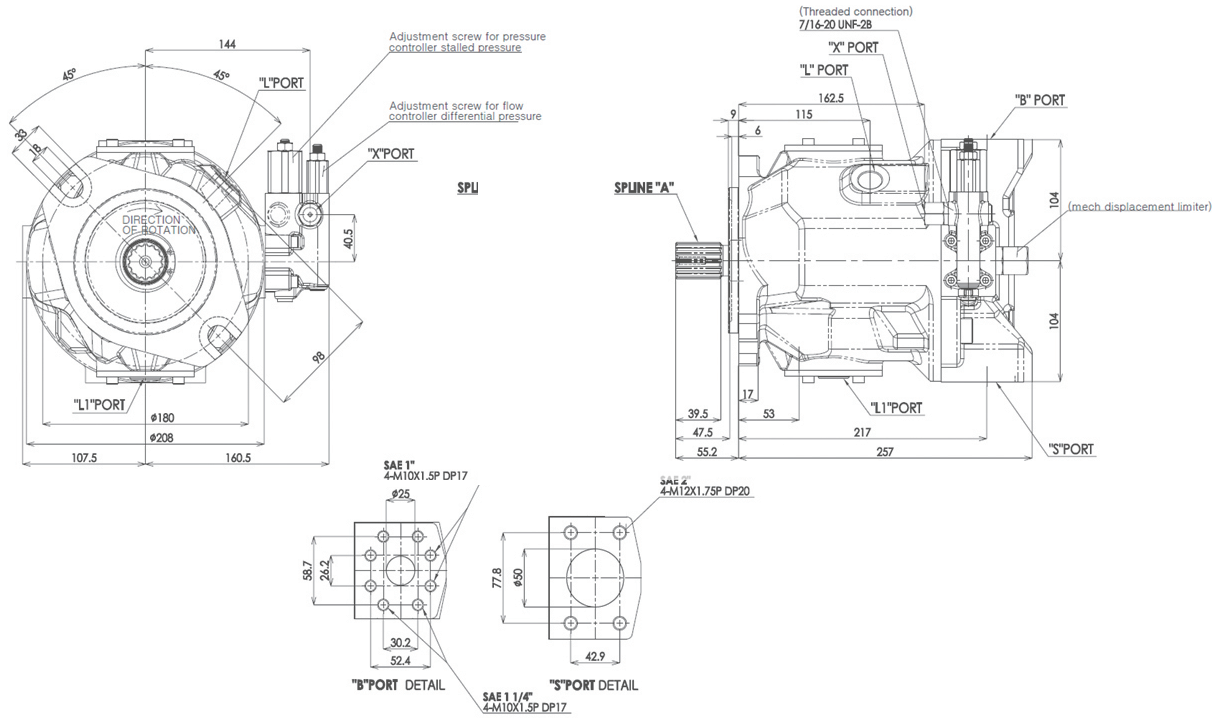
($n_1=1500\text{rpm}$, $t_{oil}=50^\circ\text{C}$)



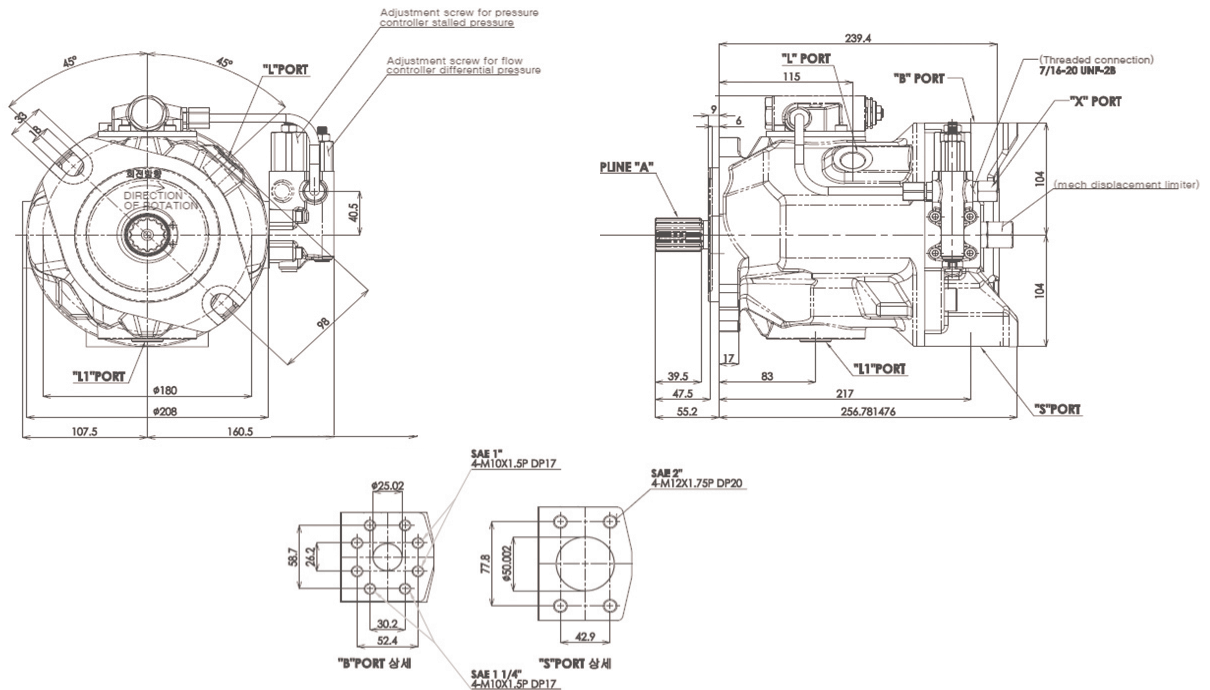
DFRL TYPE



DFR TYPE



DFRL TYPE



"A" SPLINE

No. of teeth	N	14
Module	M	12/24
Pres. Angle	°	30 °
Diameter	d	∅26.99
Diameter	D	∅31.22
Type of teeth	-	Flat root side fit

PORT SIZE

Port	Title	Configuration
B	OUTPUT	SAE 1" or 1 1/4"
S	INPUT	SAE 2"
L / L1	DRAIN	M22 x 1.5P
X	PILOT	M14 x 1.5P DP12